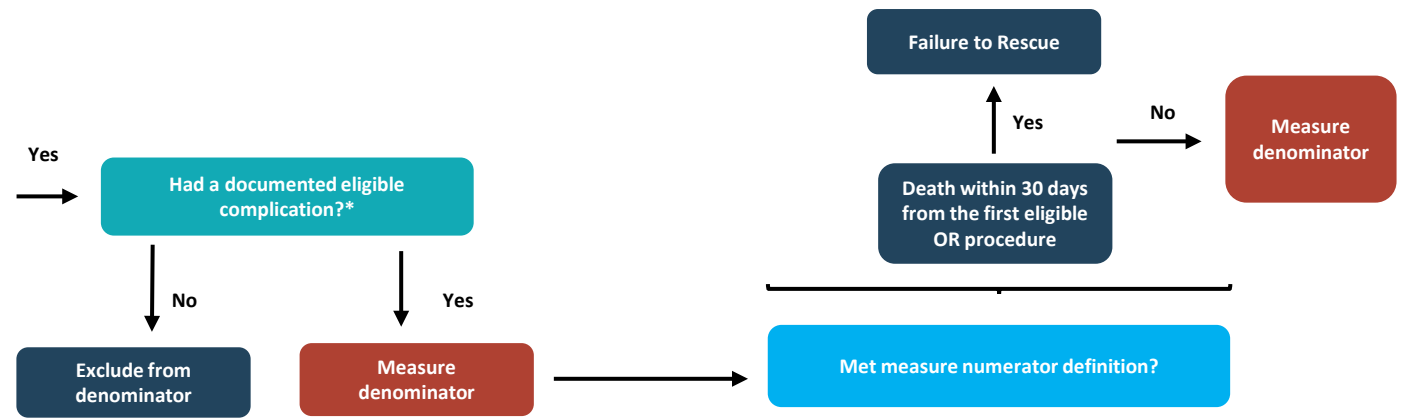
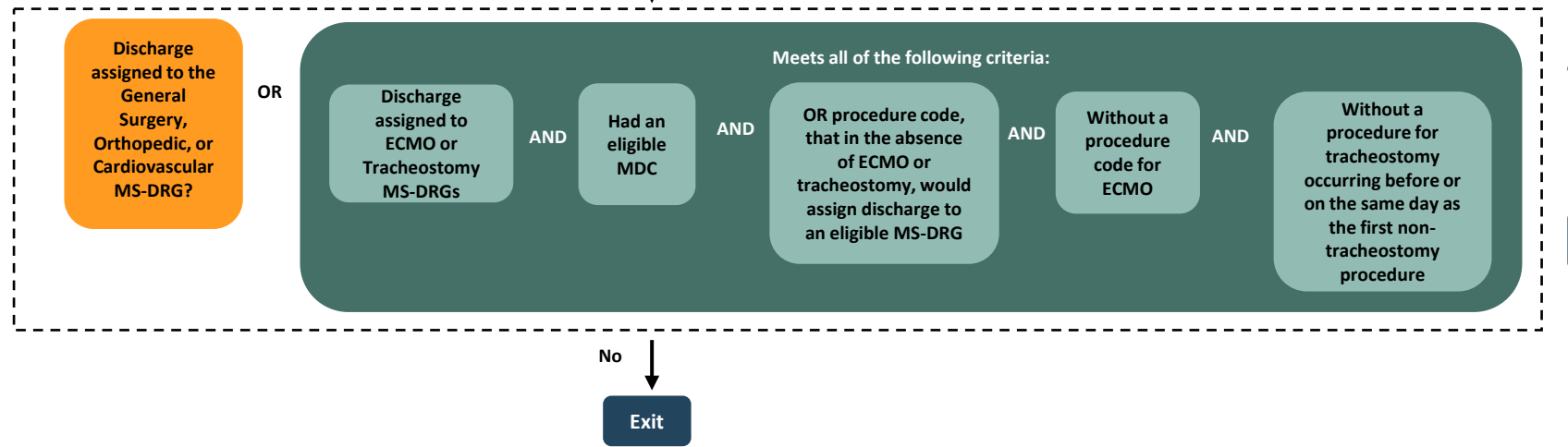
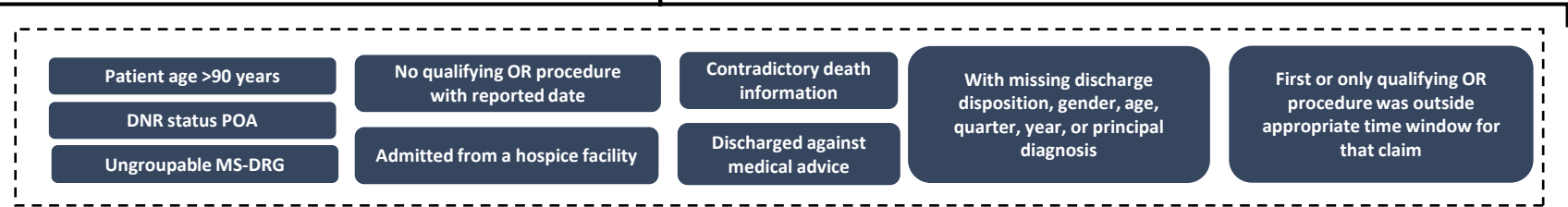
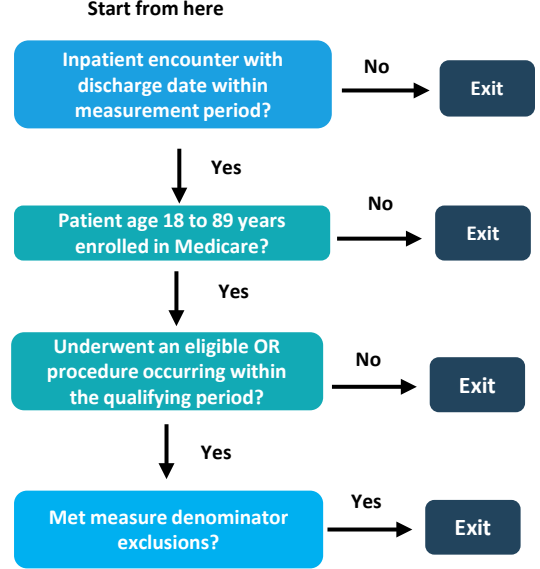


DNR: Do not resuscitate
MS-DRG: Medicare Severity Diagnosis Related Groups
OR: Operating room
POA: Present on Admission



*A documented eligible complication is a complication diagnosis from any of 30 specified categories that was not present on admission, or a complication-related procedure from any of 5 specified categories that was performed at least one day after the date of the first eligible OR procedure, and was not accompanied by a complication diagnosis from the same category present on admission (or in the principal diagnosis field).