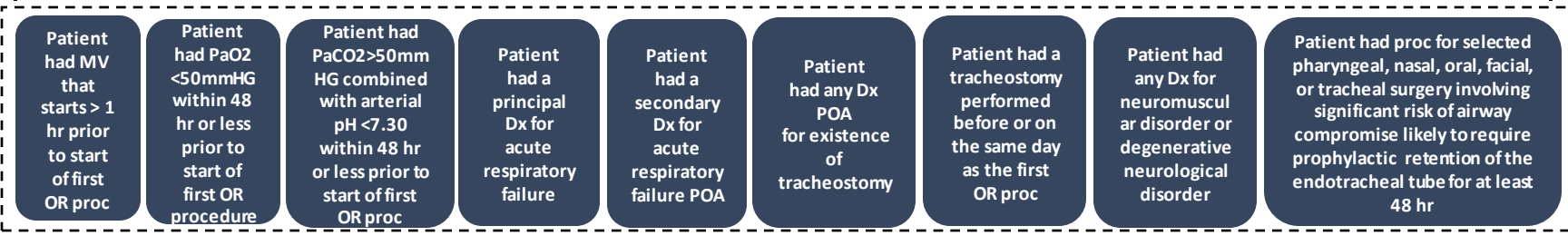
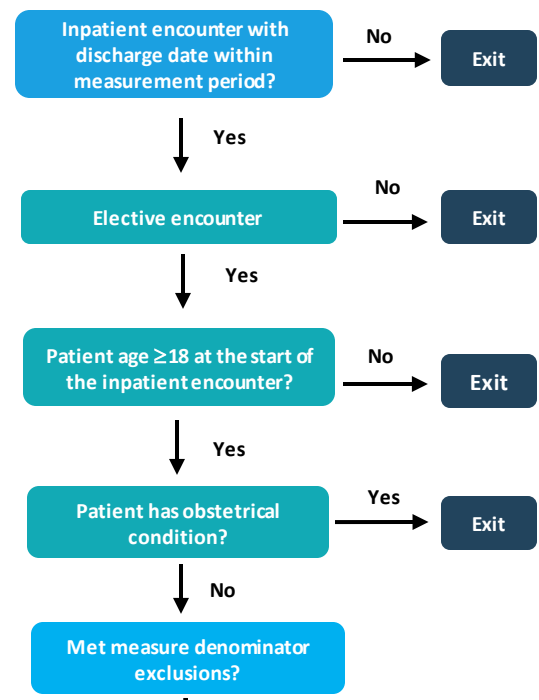


Dx: Diagnosis
POA: Present on Admission
OR: Operating Room
Proc: Procedure
MV: Mechanical Ventilation
PaO2: Arterial partial pressure of oxygen
PaCO2: Arterial partial pressure of carbon dioxide
hr: hour(s)

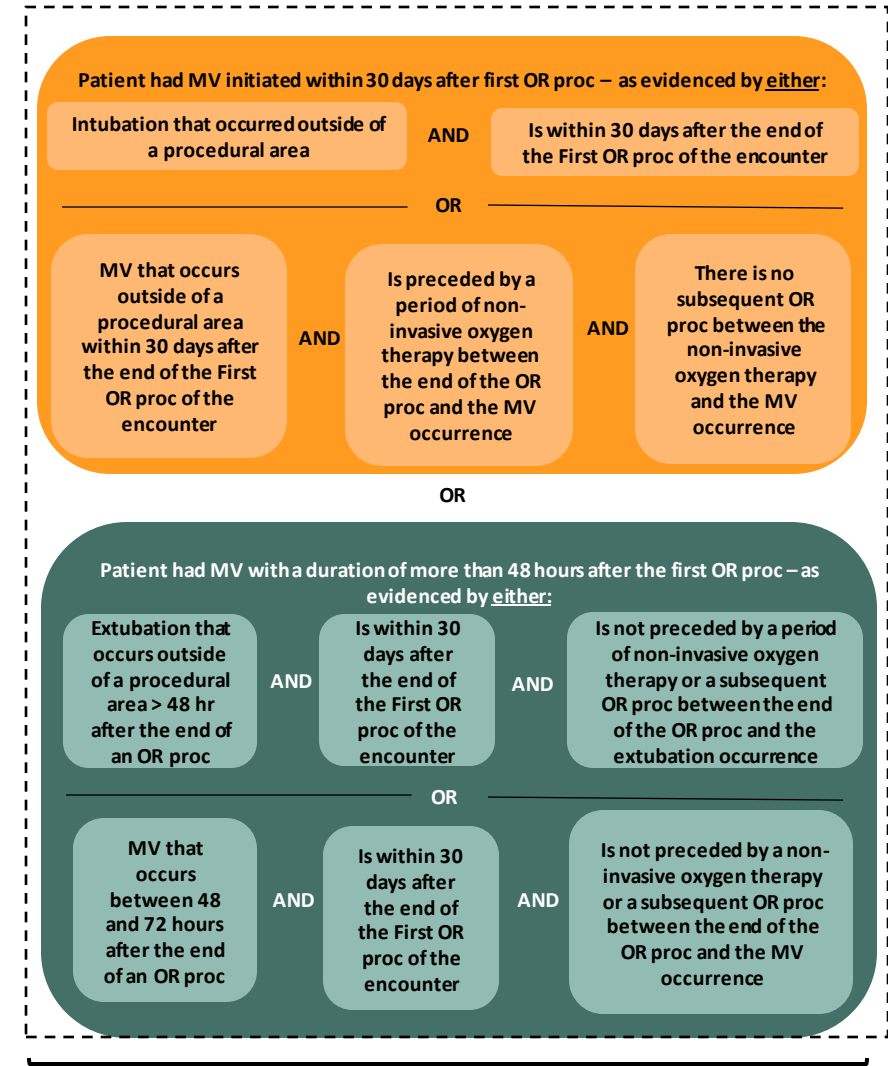
Start from here



Yes
Exclude from denominator

No
Measure denominator

Postoperative Respiratory Failure



Met measure numerator definition?

No
Measure denominator