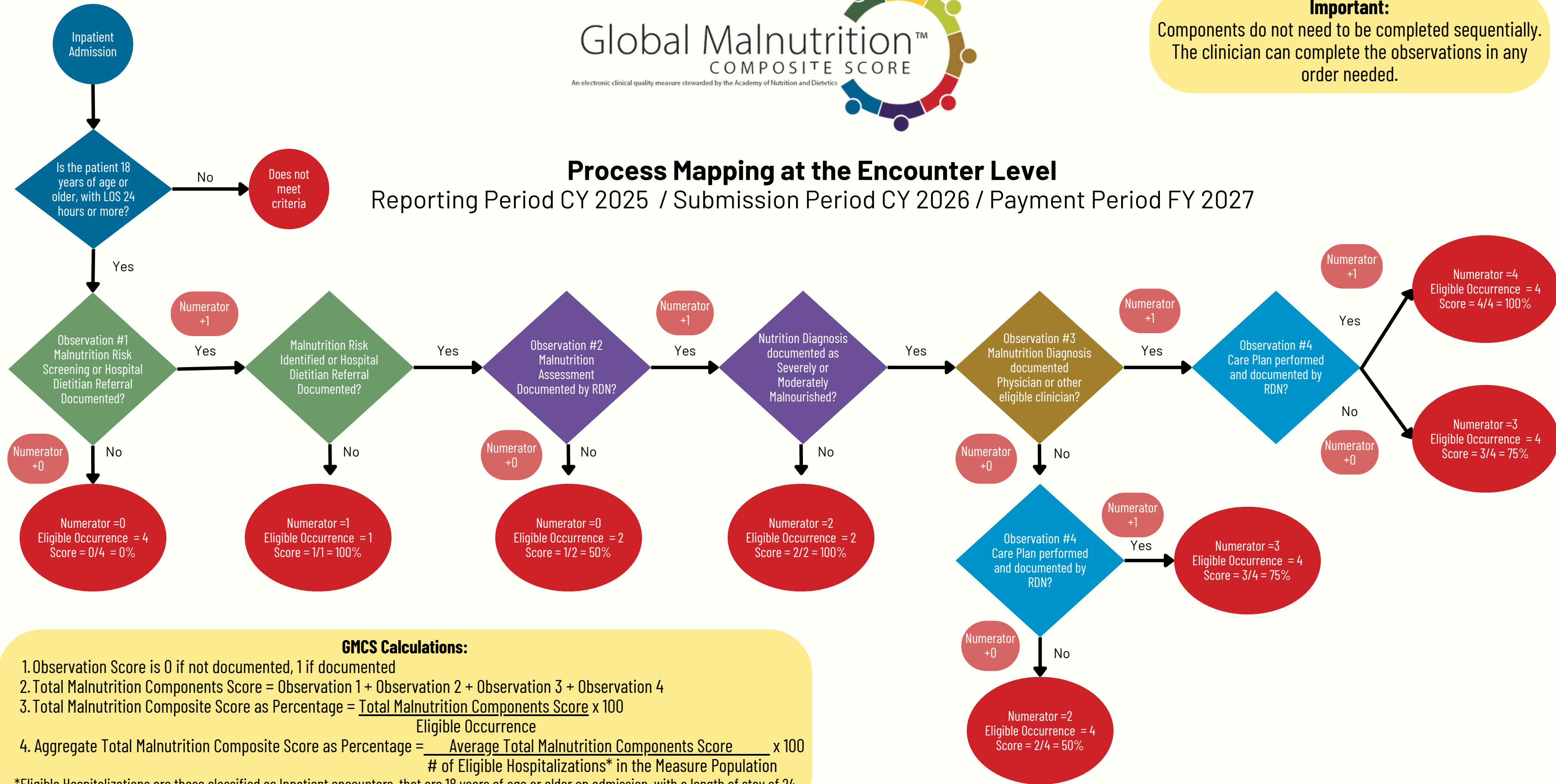


**Important:**  
Components do not need to be completed sequentially.  
The clinician can complete the observations in any order needed.

**Process Mapping at the Encounter Level**  
Reporting Period CY 2025 / Submission Period CY 2026 / Payment Period FY 2027



**GMCS Calculations:**

1. Observation Score is 0 if not documented, 1 if documented
2. Total Malnutrition Components Score = Observation 1 + Observation 2 + Observation 3 + Observation 4
3. Total Malnutrition Composite Score as Percentage =  $\frac{\text{Total Malnutrition Components Score}}{\text{Eligible Occurrence}} \times 100$
4. Aggregate Total Malnutrition Composite Score as Percentage =  $\frac{\text{Average Total Malnutrition Components Score}}{\text{\# of Eligible Hospitalizations* in the Measure Population}} \times 100$

\*Eligible Hospitalizations are those classified as Inpatient encounters, that are 18 years of age or older on admission, with a length of stay of 24 hours or more