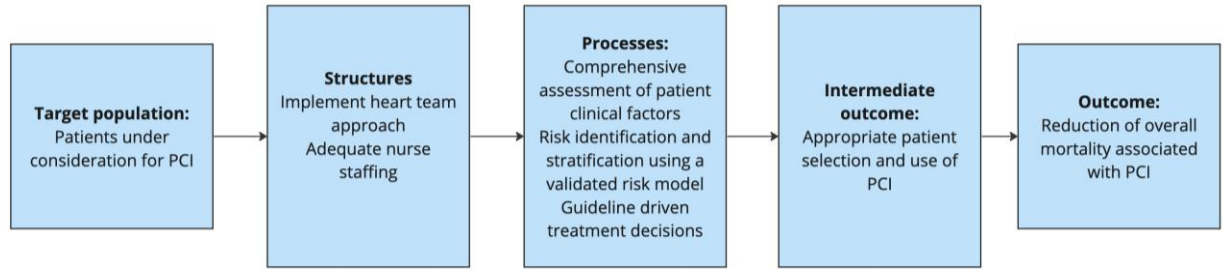


CBE 0133 *In-Hospital Risk Standardized Mortality for Percutaneous Coronary Intervention (excluding cardiogenic shock and cardiac arrest)*

- Logic model (2.1)



- Performance gap (2.4)

- Tables 1 and 2

Table 1. Mean Risk Standardized Mortality Rates Stratified by Decile (01/01/2022-12/31/2022)

	Overall	Min	Decile 1	Decile 2	Decile 3	Decile 4	Decile 5	Decile 6	Decile 7	Decile 8	Decile 9	Decile 10	Max
Mean Score	0.0088	0.0036	0.0057	0.0067	0.0073	0.0077	0.0081	0.0085	0.0091	0.0098	0.0109	0.0140	0.0282
Entities	1669	1	166	167	167	167	167	167	167	167	167	167	1
Total Persons	654127	725	110417	71836	57018	46113	43149	59815	55082	63544	61616	85537	247

Table 2. Mean Risk Standardized Mortality Rates Stratified by Decile (01/01/2021-12/31/2021)

	Overall	Min	Decile 1	Decile 2	Decile 3	Decile 4	Decile 5	Decile 6	Decile 7	Decile 8	Decile 9	Decile 10	Max
Mean Score	0.0092	0.0029	0.0058	0.0069	0.0076	0.0081	0.0084	0.0089	0.0095	0.0103	0.0115	0.0146	0.0246
Entities	1673	1	167	167	168	167	167	168	167	168	167	167	1
Total Persons	675774	5735	117304	80802	63438	56121	46434	49844	64664	61048	61892	74227	129

- Hospital characteristics (4.1.3)

- Table 3

Table 3. Hospital characteristics (n=1669)

Characteristic	#	%
Hospital location		
Rural	347	20.79
Suburban	600	35.95
Urban	720	43.14
Participant type		
Government	33	1.98
Private/Community	1508	90.35
University	125	7.49
Teaching Hospital		
No	1005	60.22
Yes	664	39.78
Public Hospital		
No	1037	62.13
Yes	630	37.75

CBE 0133 *In-Hospital Risk Standardized Mortality for Percutaneous Coronary Intervention (excluding cardiogenic shock and cardiac arrest)*

PCI Volume (Med [IQR])	380	508.00
Census Region		
Midwest Region	424	25.40
Northeast Region	250	14.98
South Region	691	41.40
West Region	304	18.21

- Characteristics of units of the eligible population (4.1.4)
 - Tables 4 and 5

Table 4. Validation and Derivation Characteristics in the All-Patients Cohort Excluding Cardiac Arrest/Shock

Description	Validation		Derivation	
	#	%	#	%
*	*	*	*	*
ALL	327566	100.00	326561	100.00
Demographics	*	*	*	*
Age: Mean (SD)	67.23	11.63	67.19	11.63
Female	100354	30.64	100142	30.67
Race	*	*	*	*
White	273041	83.35	272854	83.55
Black	27983	8.54	27790	8.51
Other	26542	8.10	25917	7.94
History and Risk Factors	*	*	*	*
Cerebrovascular disease	49784	15.20	49570	15.18
Peripheral Arterial Disease	37490	11.45	37478	11.48
Chronic Lung disease	50575	15.44	51058	15.64
Prior MI	90297	27.57	89680	27.46
Previous PCI	131216	40.06	131182	40.17
Diabetes	138559	42.30	137689	42.16
CKD	*	*	*	*
0<=GFR<15 or dialysis	11632	3.55	11659	3.57
15<=GFR<29	7686	2.35	7687	2.35
30<=GFR<45	27143	8.29	26996	8.27
45<=GFR<60	52787	16.11	52580	16.10
GFR>60	222281	67.86	221678	67.88
Other	6037	1.84	5961	1.83
CSHAScale	*	*	*	*
Missing	646	0.20	663	0.20
None (1 to 4)	255734	78.07	254847	78.04
Intermediate (5 or 6)	61691	18.83	61531	18.84
Severe (7 to 9)	9495	2.90	9520	2.92
Aortic Stenosis	8402	2.56	8479	2.60
Ejection fraction percentage	*	*	*	*
Unknown	86238	26.33	86119	26.37
Mean (SD)	51.43	12.93	51.51	12.88
Systolic Blood Pressure	*	*	*	*

CBE 0133 *In-Hospital Risk Standardized Mortality for Percutaneous Coronary Intervention (excluding cardiogenic shock and cardiac arrest)*

NA or Missing	1647	0.50	1719	0.53
Mean, SD	150.02	25.81	150.01	25.78
STEMI	49276	15.04	48787	14.94
Clinical Instability	*	*	*	*
Elective PCI and Neither shock nor CI	139999	42.74	139625	42.76
Urgent PCI and Neither shock nor CI	125548	38.33	125025	38.29
Emergency PCI and Neither shock nor CI	46977	14.34	46838	14.34
No Salvage PCI and CI	14926	4.56	15006	4.60
Other	116	0.04	67	0.02
NYHA class	*	*	*	*
Class IV	6677	2.04	6634	2.03
Class I/II/III	81658	24.93	81083	24.83
No CHF	239231	73.03	238844	73.14
At least 1 previously treated lesion within 1 month with in-stent thrombosis	905	0.28	862	0.26
Highest risk lesion -- Segment category	*	*	*	*
Other	62369	19.04	62638	19.18
pRCA/mLAD/pCIRC	182873	55.83	181664	55.63
pLAD	68845	21.02	68909	21.10
Left Main	13479	4.11	13350	4.09
Number of diseased vessels	*	*	*	*
Missing	1376	0.42	1408	0.43
0	1738	0.53	1818	0.56
1	173728	53.04	173202	53.04
2	96007	29.31	95750	29.32
3	54717	16.70	54383	16.65
Chronic total occlusion	12967	3.96	13034	3.99
Surgical Turndown	13035	3.98	12929	3.96
In-hospital Mortality	2833	0.86	2735	0.84

Values are % or mean (SD).

CKD = chronic kidney disease; GFR = glomerular filtration rate; LAD = left anterior descending; LVEF = left ventricular ejection fraction; MI = myocardial infarction; NYHA = New York Heart Association; PCI = percutaneous coronary intervention; STEMI= ST-segment elevation myocardial infarction;

Table 5. Unadjusted Mortality by Predictor Variable

Description	Overall Cohort			Prob
	N	MRN (Observed)	MRP (Predicted)	p-value
*	*	*	*	*
Overall	654127	5568	0.85	0.2287
STEMI	*	*	*	*
No	556064	3249	0.58	0.7785
Yes	98063	2319	2.36	0.1564
Female	*	*	*	*

CBE 0133 *In-Hospital Risk Standardized Mortality for Percutaneous Coronary Intervention (excluding cardiogenic shock and cardiac arrest)*

No	453631	3156	0.70	0.4696
Yes	200496	2412	1.20	0.3111
Age>70	*	*	*	*
No	383697	1867	0.49	0.3425
Yes	270430	3701	1.37	0.5093
Diabetes	*	*	*	*
No	377879	2802	0.74	0.3935
Yes	276248	2766	1.00	0.4081
Clinical Instability	*	*	*	*
Elective PCI and Neither shock nor CI	279624	443	0.16	0.5815
Urgent PCI and Neither shock nor CI	250573	1795	0.72	0.0005
Emergency PCI and Neither shock nor CI	93815	1860	1.98	0.7564
No Salvage PCI and CI	29932	1470	4.91	0.1481

- Reliability testing results (4.2.3)
 - Tables 6, 7, 8
 - Figures 1, 2, 3, 4

Table 6. Signal to Noise Reliability (01/01/2022-12/31/2022)

Description	N	Mean	STD	Min	Max	P1	P99	Q1	Q3	Median	Qrange
Among All Hospitals	1669	0.9192	0.1005	0.1156	0.9954	0.4778	0.9902	0.9112	0.9725	0.9516	0.0613

Table 7. Distribution of Risk Standardized Mortality Rates Stratified by the Randomly Split Samples (2021)

Description	Randomly Split Samples	
	First (RAND=1) RSMR	Second (RAND=0) RSMR
N	1669	1672
Mean	0.0090	0.0091
Std Deviation	0.0019	0.0021
100% Max	0.0212	0.0206
99%	0.0153	0.0167
95%	0.0127	0.0131
90%	0.0114	0.0117
75% Q3	0.0099	0.0100
50% Median	0.0086	0.0087
25% Q1	0.0078	0.0078
10%	0.0070	0.0070
5%	0.0064	0.0065
1%	0.0054	0.0056
0% Min	0.0038	0.0028

Correlation coefficient: 0.28062

ICC: 0.27821

Figure 1. Distribution of Risk Standardized Mortality Rates Stratified by the Randomly Split Samples (2021)

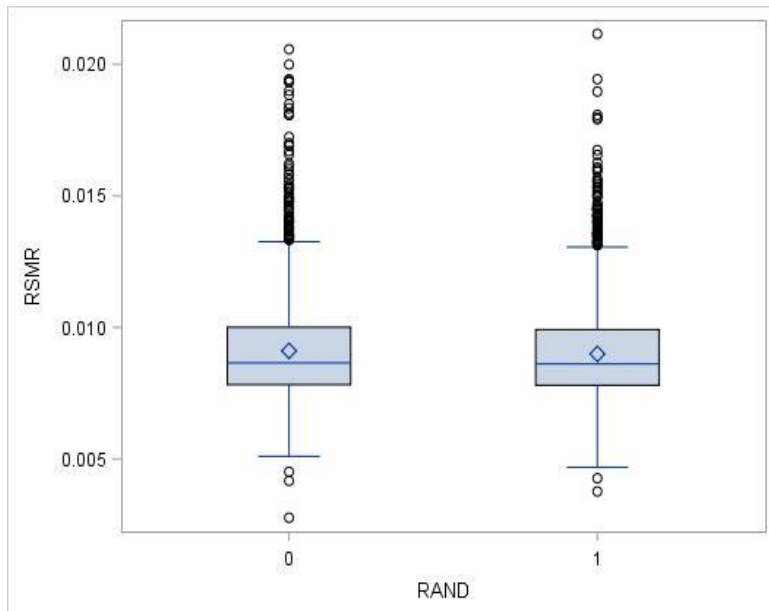


Figure 2. Distribution of Risk Standardized Mortality Rates Stratified by the Randomly Split Sample Correlation (2021)

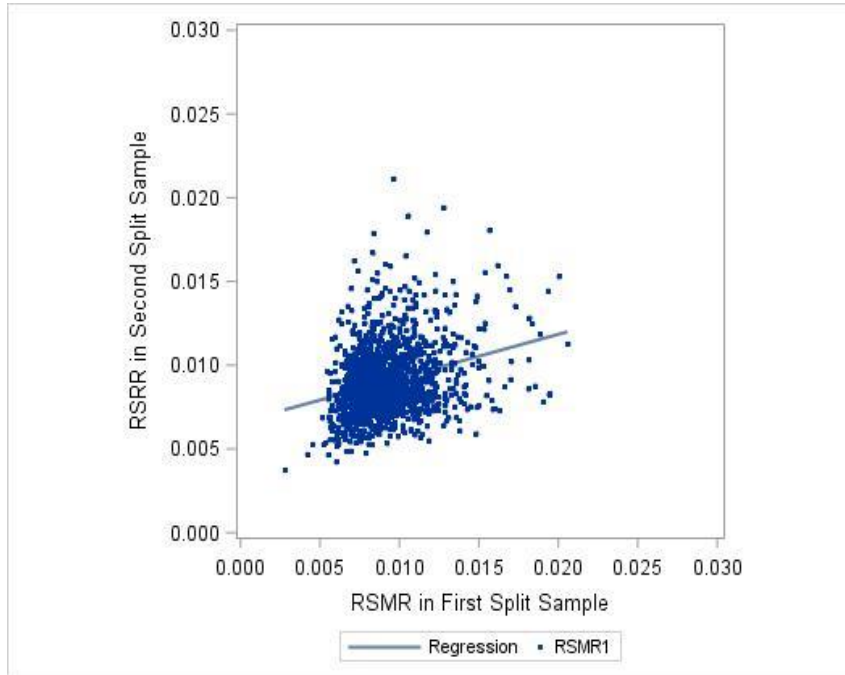


Table 8. Distribution of Risk Standardized Mortality Rates Stratified by the Randomly Split Samples (2022)

Description	Randomly Split Samples	
	First (RAND=1) RSMR	Second (RAND=0) RSMR
N	1668	1668
Mean	0.0085	0.0088
Std Deviation	0.0018	0.0019
100% Max	0.0219	0.0287
99%	0.0152	0.0149
95%	0.0119	0.0123
90%	0.0109	0.0112
75% Q3	0.0093	0.0096
50% Median	0.0081	0.0084
25% Q1	0.0074	0.0077
10%	0.0067	0.0070
5%	0.0063	0.0066
1%	0.0055	0.0056
0% Min	0.0045	0.0045

Correlation coefficient: 0.28583

ICC: 0.28253

Figure 3. Distribution of Risk Standardized Mortality Rates Stratified by the Randomly Split Sample Correlation (2022)

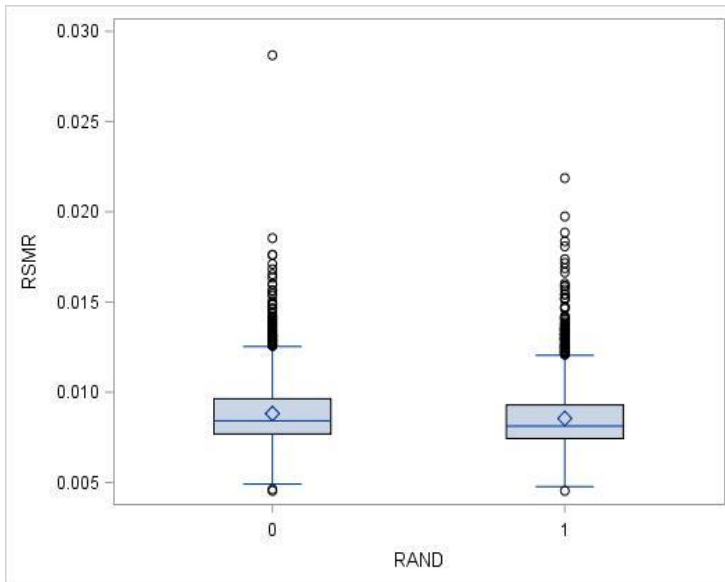
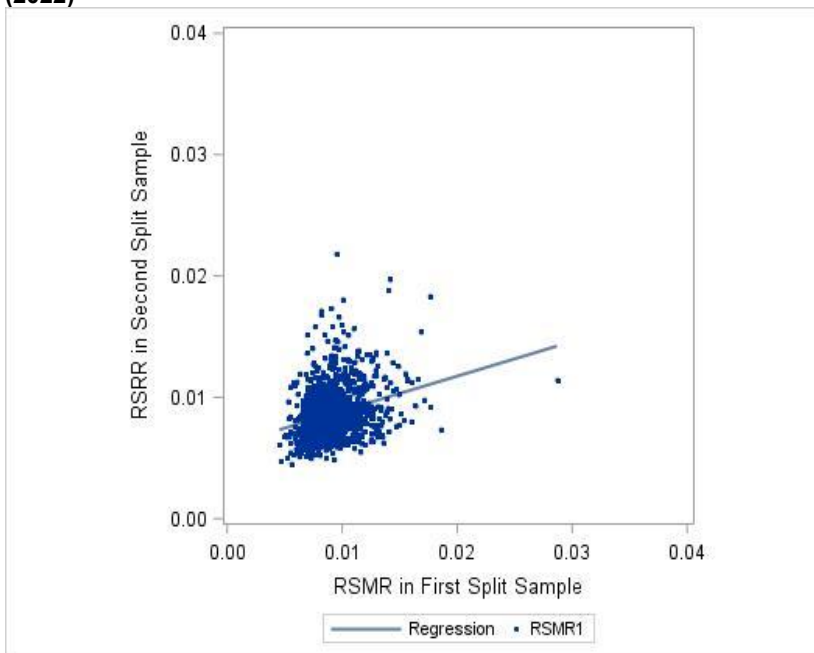


Figure 4. Distribution of Risk Standardized Mortality Rates Stratified by the Randomly Split Samples (2022)



- Validity testing results (4.3.4)
 - Table 9
 - Figure 5

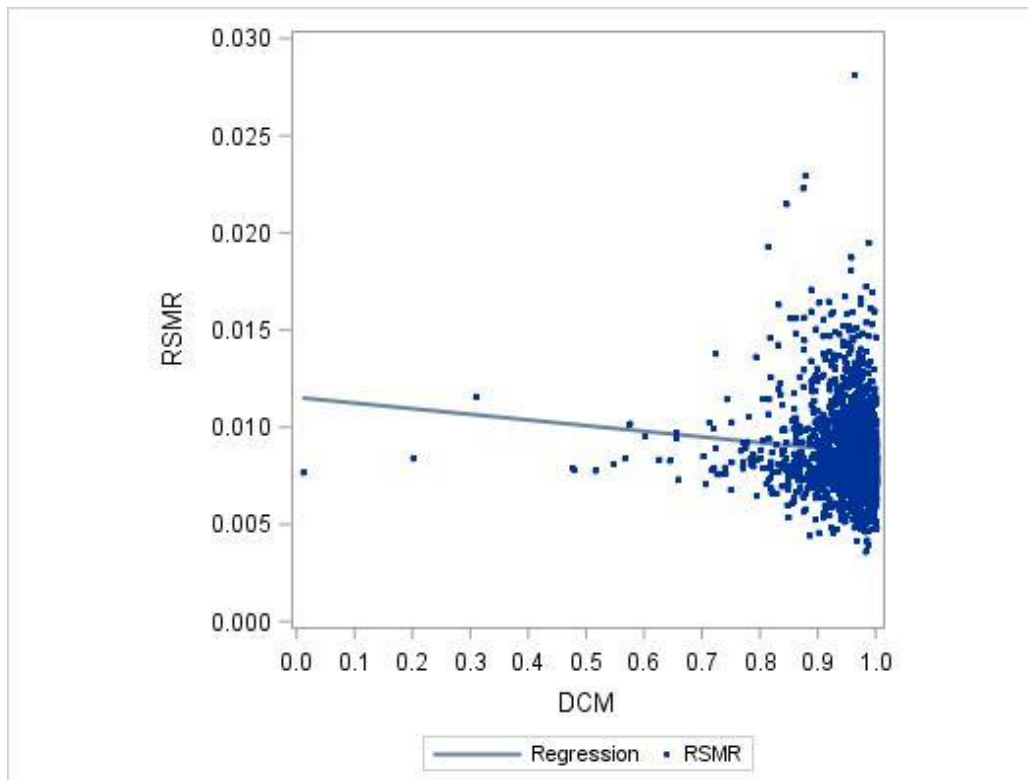
CBE 0133 *In-Hospital Risk Standardized Mortality for Percutaneous Coronary Intervention (excluding cardiogenic shock and cardiac arrest)*

Table 9. Distribution of Performance Rate for Discharge Medications Composite Measure and RSMR in the Time Period 2022Q1 to 2022Q4 (N=1648)

Description	In-Hospital Mortality Measure		Composite Measure of Discharge Medications	
	HVOL	RSMR	HVOL	DCM
N	1648	1648	1648	1648
Mean	395.96	0.0088	400.53	0.9436
Std Deviation	338.01	0.0024	347.13	0.0679
100% Max	3337	0.0282	3506	1.0000
99%	1541	0.0163	1570	1.0000
95%	1015	0.0134	1021	1.0000
90%	804	0.0118	840	0.9933
75% Q3	546	0.0098	548	0.9821
50% Median	306	0.0083	306	0.9629
25% Q1	162.5	0.0073	159	0.9266
10%	76	0.0064	74	0.8750
5%	46	0.0058	47	0.8360
1%	16	0.0049	16	0.7052
0% Min	2	0.0036	2	0.0102

Correlation coefficient: -0.08285

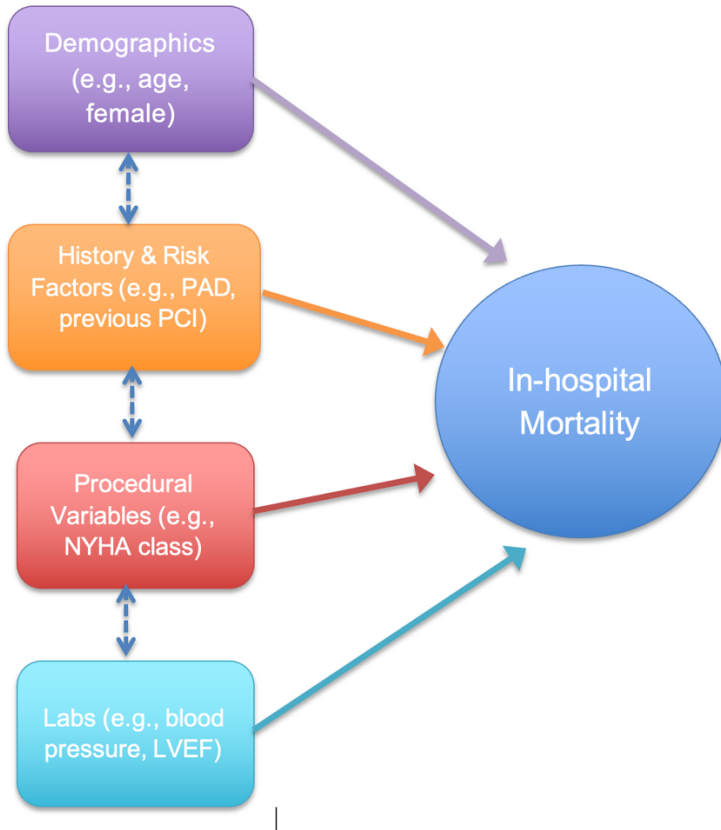
Figure 5. Distribution of Discharge Medications Risk by Standardized Mortality Rates



CBE 0133 *In-Hospital Risk Standardized Mortality for Percutaneous Coronary Intervention (excluding cardiogenic shock and cardiac arrest)*

- Risk adjustment conceptual model (4.4.2a)
 - Figure 6

Figure 6. Conceptual Model



- Risk factor characteristics across measured entities (4.4.3)
 - Table 10

Table 10. Selected Characteristics

Description	#	%
ALL	654127	100.00
Age>=65		
No	257090	39.30
Yes	397037	60.70
Female		
No	453631	69.35
Yes	200496	30.65
RACE		
Hispanic	46457	7.10
White non-Hispanic	511205	78.15
Black non-Hispanic	55002	8.41
Other	41463	6.34
Medicare		

CBE 0133 *In-Hospital Risk Standardized Mortality for Percutaneous Coronary Intervention (excluding cardiogenic shock and cardiac arrest)*

No	282691	43.22
Yes	371436	56.78
Medicaid		
No	567602	86.77
Yes	86525	13.23
Dual Eligibility		
No	616215	94.20
Yes	37912	5.80
Hospital % Non-White		
Q1 (0.00% to 5.97%)	136837	20.92
Q2 (>5.97% to 14.46%)	181992	27.82
Q3 (>14.46% to 32.24%)	185208	28.31
Q4 (>32.24%)	150090	22.95
Hospital % Dual		
Q1 (0.00%)	129511	19.80
Q2 (>0.00% to 4.37%)	170869	26.12
Q3 (>4.37% to 9.60%)	192465	29.42
Q4 (>9.60%)	161282	24.66

- Risk adjustment modeling (4.4.4)
 - Tables 11 and 12

Table 11. Model Variables

Variable	Variable Type	Elements (Data Collection Form Identifier)
Age Splines: Age <45 Age >45	Number	DOB (2050) and Arrival Date/Time (3001)
Female	Boolean (yes or no)	Sex (2060)
Cerebrovascular Disease	Boolean (yes or no)	Cerebrovascular Disease (4551)
Peripheral Arterial Disease	Boolean (yes or no)	Peripheral Arterial Disease (4610)
Chronic Lung Disease	Boolean (yes or no)	Chronic Lung Disease (4576)
Prior PCI	Boolean (yes or no)	Prior PCI (4495)
Diabetes Mellitus	Boolean (yes or no)	Diabetes Mellitus (4555)
Severe Frailty	Boolean (yes or no)	CSHA Clinical Frailty Scale (4561) = one of the following: severely frail, very severely frail or terminally ill <i>and none</i> of the following: Salvage PCI (7800)

CBE 0133 *In-Hospital Risk Standardized Mortality for Percutaneous Coronary Intervention (excluding cardiogenic shock and cardiac arrest)*

<p>NYHA: No HF (Reference) NYHA IV NYHA I, II, III</p>	<p>Category</p>	<p>NYHA Class (4011)</p>
<p>CKD Stage: GFR 0-14 or dialysis GFR 15-29 GFR 30-44 GFR 45-60 Other (Reference)</p>	<p>Categorical</p>	<p>$eGFR = 141 \times \min(SCr/\kappa, 1)^\alpha \times \max(SCr/\kappa, 1)^{-1.209} \times 0.993^{Age} \times 1.018$ [if female] $\times 1.159$ [if Black]; $\kappa = 0.7$ (females) or 0.9 (males), $\alpha = -0.329$ (females) or -0.411 (males). Currently on Dialysis (4560)</p>
<p>Left Ventricular Ejection Fraction (LVEF) splines: LVEF < 55 LVEF > 55 LVEF (not measured – Imputed value)</p>	<p>Number for the first two and binary for the last one</p>	<p>Ejection Fraction (7061) <u>and</u> if missing then use (5116) If not measured value imputed as the median of LVEF in the stratified groups by heart failure, myocardial infarction, and shock</p>
<p>Systolic Blood Pressure (SBP) splines: SBP < 90 SBP 90-180 SBP > 180</p>	<p>Number</p>	<p>Systolic Blood Pressure (6016)</p>
<p>PCI Status and Clinical Instability</p>	<p>Categories</p>	<p>Six mutually exclusive groups: 1. Salvage PCI (7800) 2. Cardiovascular instability* without shock (7415) <u>or</u> salvage PCI (7800) 3. Emergency PCI (7800) without shock or cardiac instability*(7415) 4. Urgent PCI (7800) without shock <u>or</u> cardiovascular instability* (7415) 5. Elective PCI (7800) without shock <u>or</u></p>

CBE 0133 *In-Hospital Risk Standardized Mortality for Percutaneous Coronary Intervention (excluding cardiogenic shock and cardiac arrest)*

		cardiovascular instability* (7415), reference group 6. Other, reference group * cardiovascular instability defined as: Cardiovascular Instability Type (7415) of Hemodynamic instability, Acute Heart Failure Symptoms, or Ventricular arrhythmia; but without shock.
Aortic Stenosis	Boolean	Valvular disease stenosis type (7450) = aortic stenosis and Stenosis severity (7451) = moderate <u>or</u> severe
Surgical Turndown	Boolean	CV treatment decision (7816) = surgery not recommended
ST-segment elevation MI	Boolean	Percutaneous Coronary Intervention Indication (7825) = <u>any</u> of the following: STEMI - Immediate PCI for Acute STEMI STEMI - Stable (<=12 hrs from Symptom onset), STEMI - Stable (>12 hrs from Symptom onset), STEMI - Unstable (>12hrs from Symptom onset), STEMI (after successful lytics), STEMI - Rescue (after unsuccessful lytics)
Number of diseased vessels 3 2 Other (reference)	Categories	Number of diseased vessels determined by: Native stenosis (7508) = LM >= 50% stenosis <u>or</u> LAD, CFX or RCA with one or more segments with > = 70% stenosis <u>or</u> iFR ratio <=0.8 (7513) <u>or</u> FFR ratio <=0.89 (7512)
Highest Risk Lesion treated with PCI Left Main Proximal LAD Other (Reference)	Categories	Left Main = Segment Number (7507) = 11a, 11b or 11c <u>or</u> Proximal Left anterior descending = Segment Number (7507) = 12
Chronic Total Occlusion	Boolean (yes or no)	Chronic Total Occlusion (8005) = Yes
In-stent Thrombosis	Boolean (yes or no)	In-stent Thrombosis (8012) within 30 days of prior PCI calculated as difference between prior PCI data (8009) and procedure data (7000)

CBE 0133 *In-Hospital Risk Standardized Mortality for Percutaneous Coronary Intervention (excluding cardiogenic shock and cardiac arrest)*

Table 12. Model Coefficients for All PCI with No Prior Cardiac Arrest or Cardiogenic Shock

Variable	Estimate	Standard Error	T-Value	Pr > T-Value	OR	LOR	UOR
Age							
<45 yrs.	-0.0055	0.0189	-0.2890	0.7726	0.9946	0.9584	1.0321
≥45 yrs.	0.0478	0.0014	33.0445	0.0000	1.0490	1.0460	1.0520
Female	0.3190	0.0293	10.8928	0.0000	1.3758	1.2991	1.4571
Cerebrovascular disease	0.1801	0.0351	5.1239	0.0000	1.1973	1.1176	1.2827
Peripheral Arterial Disease	0.2654	0.0388	6.8349	0.0000	1.3039	1.2084	1.4071
Chronic Lung disease	0.3502	0.0341	10.2620	0.0000	1.4194	1.3275	1.5175
Previous PCI	-0.2279	0.0320	-7.1124	0.0000	0.7962	0.7477	0.8478
Diabetes	0.1240	0.0301	4.1230	0.0000	1.1321	1.0672	1.2008
CKD stage							
Stage 5 (GFR 0-14)	1.2884	0.0505	25.5241	0.0000	3.6271	3.2854	4.0043
Stage 4 (GFR 15-29)	1.1990	0.0519	23.1126	0.0000	3.3169	2.9962	3.6719
Stage 3(GFR 30-44)	0.5733	0.0428	13.3811	0.0000	1.7742	1.6313	1.9296
Stage 3a (GFR 45-60)	0.2417	0.0399	6.0566	0.0000	1.2734	1.1776	1.3770
Severe Frailty and No CA/Salvage PCI/Shock	1.2235	0.0407	30.0445	0.0000	3.3990	3.1382	3.6814
Aortic Stenosis (at least moderate)	0.3315	0.0730	4.5437	0.0000	1.3931	1.2075	1.6073
LVEF							
Not measured	0.0961	0.0406	2.3681	0.0179	1.1009	1.0167	1.1921
<55%	-0.0173	0.0016	10.8189	0.0000	0.9828	0.9797	0.9859
≥55%	-0.0088	0.0054	-1.6290	0.1033	0.9912	0.9808	1.0018
Systolic Blood Pressure							
<90 mmHG	-0.0065	0.0056	-1.1581	0.2468	0.9935	0.9825	1.0045
90-180 mmHG	-0.0187	0.0007	28.3523	0.0000	0.9815	0.9802	0.9827
>180 mmHg	0.0091	0.0026	3.4545	0.0006	1.0091	1.0039	1.0143
STEMI	0.8370	0.0547	15.3125	0.0000	2.3095	2.0749	2.5707
Clinical instability							
Urgent PCI without shock/CVI	1.2168	0.0548	22.2235	0.0000	3.3764	3.0328	3.7589
Emergency PCI without shock/CVI	1.8060	0.0729	24.7679	0.0000	6.0863	5.2757	7.0214
No Salvage PCI and CVI	2.2365	0.0626	35.7023	0.0000	9.3606	8.2790	10.5834
Heart failure							
NYHA class 1/2/3	0.0634	0.0386	1.6410	0.1008	1.0654	0.9878	1.1492
NYHA class 4	0.4991	0.0577	8.6484	0.0000	1.6472	1.4711	1.8445
In-stent thrombosis	0.5314	0.1461	3.6385	0.0003	1.7013	1.2778	2.2652
Highest risk lesion							
Proximal LAD vs. other	0.3193	0.0332	9.6223	0.0000	1.3761	1.2895	1.4686

CBE 0133 *In-Hospital Risk Standardized Mortality for Percutaneous Coronary Intervention (excluding cardiogenic shock and cardiac arrest)*

Left main vs. other	0.6758	0.0507	13.3348	0.0000	1.9656	1.7798	2.1709
Number of diseased vessels							
2 vs. 1	0.2471	0.0347	7.1196	0.0000	1.2803	1.1961	1.3705
3 vs.1	0.5180	0.0373	13.8951	0.0000	1.6787	1.5604	1.8060
Chronic total occlusion	0.5264	0.0648	8.1181	0.0000	1.6928	1.4908	1.9222
Surgical Turndown	0.2403	0.0525	4.5758	0.0000	1.2716	1.1472	1.4094

*Per 10-unit increase. † Per 5-unit increase. ‡ Versus GFR >60. § versus elective PCI without shock/CI. ¶ versus no heart failure within 2 weeks. ** vs no cardiac arrest.

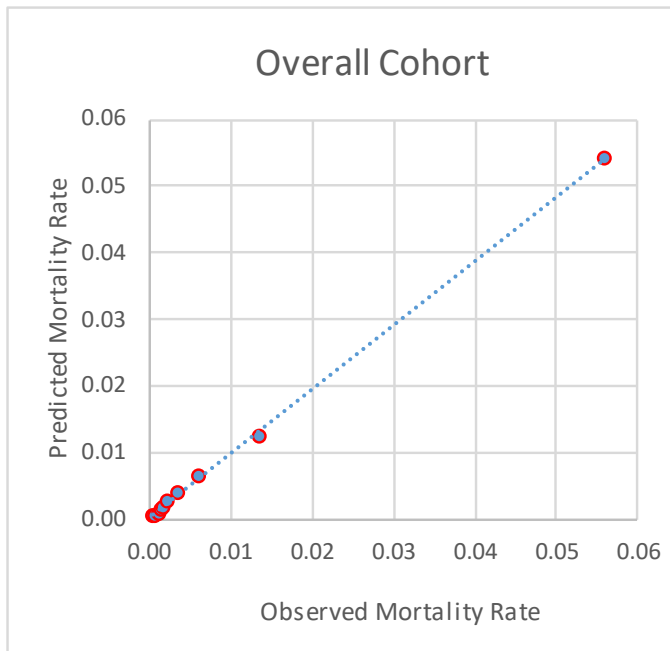
CVI = cardiovascular instability; CKD = chronic kidney disease; GFR = glomerular filtration rate; LAD = left anterior descending; LVEF = left ventricular ejection fraction; NYHA = New York Heart Association; PCI = percutaneous coronary intervention; STEMI = ST- elevation myocardial

- Calibration and discrimination (4.4.5)
 - Table 13
 - Figure 7

Table 13. C-Statistics Results

	Development	Validation
Sample, n	326,561	327,566
Mortality rate	0.8375	0.8649
Discrimination		
C-statistic	0.8851	0.8836
Adjusted R-square	0.2393	0.2329
Predictive Ability		
Lowest Decile	0.0003	0.0003
Highest Decile	0.0553	0.0567

Figure 7. Risk decile plot in the all-patients cohort excluding cardiac arrest or cardiogenic shock



CBE 0133 *In-Hospital Risk Standardized Mortality for Percutaneous Coronary Intervention (excluding cardiogenic shock and cardiac arrest)*

- Calibration and discrimination testing results (4.4.5a)
 - Figures 8, 9 and 10

Figure 8. Calibration Curve

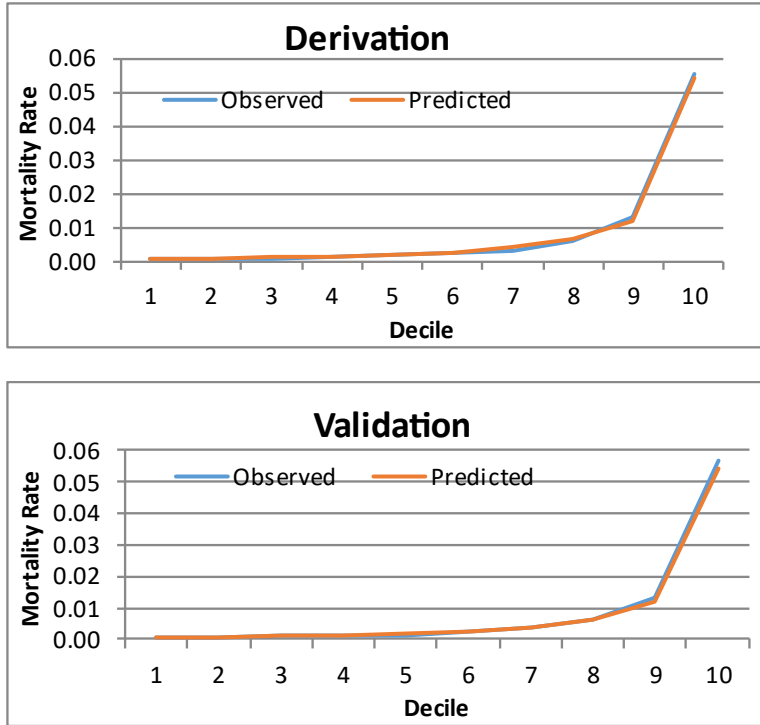


Figure 9. Adjusted Distribution of Mortality

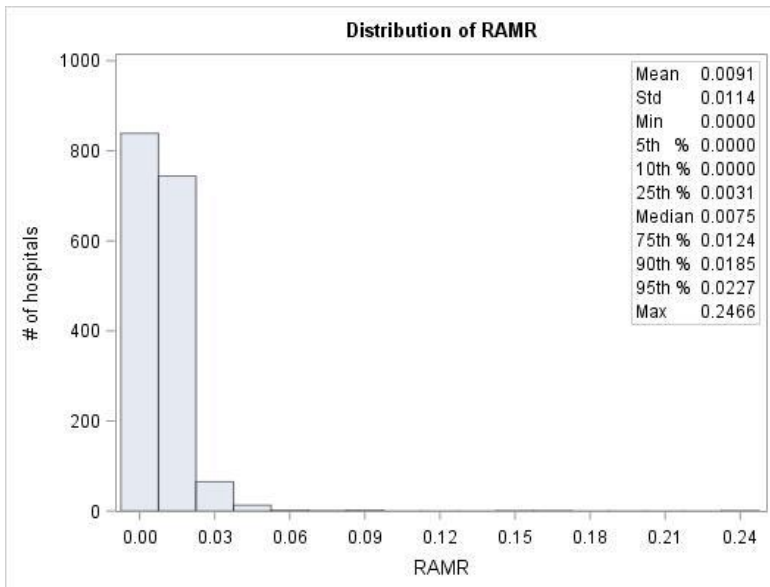
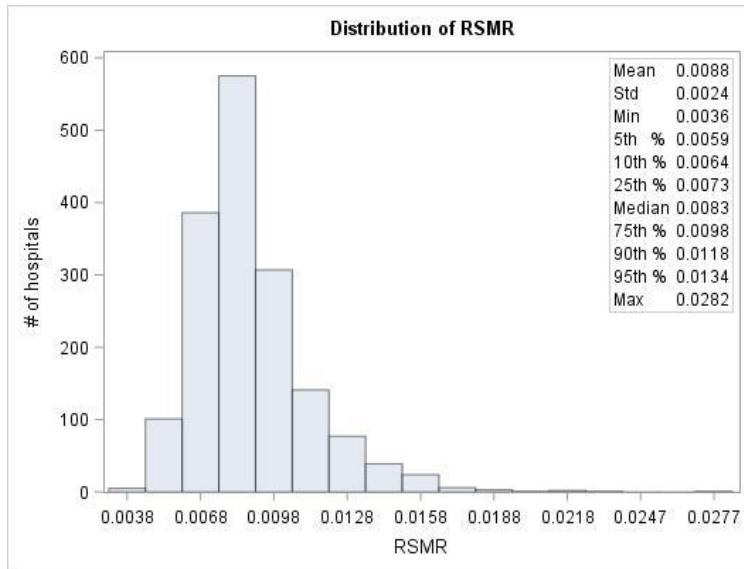


Figure 10. Distribution of Hospital Risk-Standardized Mortality Rates (excluding CA/Shock)



- Contributions toward advancing health equity (5.1)
 - Table 14, 15, 16, 17, and 18
 - Figure 11, 12, 13, 14, and 15

Table 14. Distribution of Risk Standardized Mortality Rates Stratified by Hospital Volume

Description	Hospital Volume	Risk Standardized Mortality Rates
N	1669	1669
Mean	391.93	0.0088
Std Deviation	337.88	0.0024
100% Max	3337	0.0282
99%	1541	0.0163
95%	1000	0.0134
90%	803	0.0118
75% Q3	541	0.0098
50% Median	301	0.0083
25% Q1	157	0.0073
10%	72	0.0064
5%	44	0.0059
1%	14	0.0049
0% Min	2	0.0036

CBE 0133 *In-Hospital Risk Standardized Mortality for Percutaneous Coronary Intervention (excluding cardiogenic shock and cardiac arrest)*

Figure 10: Distribution of Risk Standardized Mortality Rates

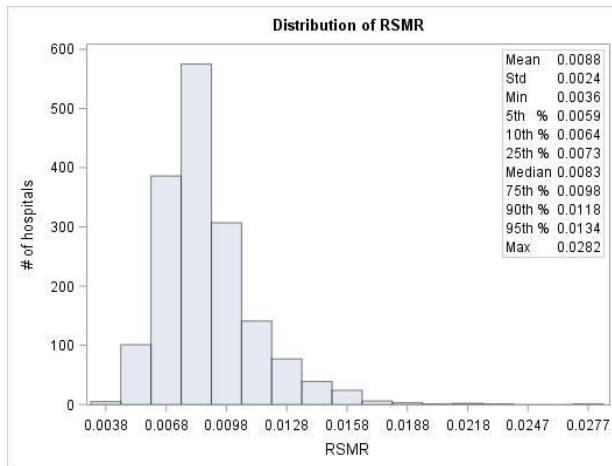


Table 15. Distribution of RSMR Stratified by Quartile of Hospital Percent Age ≥ 65

Description	%Age>=65	%Age>=65			
		Q1	Q2	Q3	Q4
N	1669	417	417	418	417
Mean	58.35%	0.89%	0.90%	0.87%	0.86%
Std Deviation	8.84%	0.21%	0.24%	0.26%	0.23%
100% Max	100.00%	1.95%	2.30%	2.82%	1.73%
99%	77.58%	1.61%	1.59%	1.63%	1.64%
95%	71.55%	1.35%	1.37%	1.34%	1.29%
90%	68.35%	1.15%	1.24%	1.19%	1.16%
75% Q3	63.93%	0.97%	1.01%	0.99%	0.96%
50% Median	58.76%	0.84%	0.85%	0.82%	0.81%
25% Q1	53.71%	0.75%	0.74%	0.71%	0.71%
10%	47.80%	0.68%	0.63%	0.60%	0.62%
5%	43.53%	0.66%	0.58%	0.55%	0.55%
1%	32.35%	0.59%	0.49%	0.49%	0.47%
0% Min	0.00%	0.48%	0.42%	0.42%	0.36%

Figure 12. Distribution of RSMR Stratified by Quartile of Hospital Percent Age ≥ 65

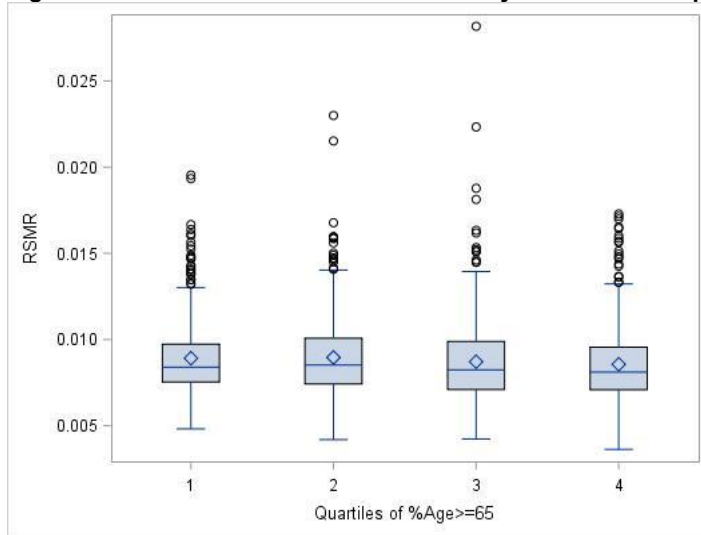


Table 16. Distribution of RSMR Stratified by Quartile of Hospital Percent Female

Description	%Female	%Female			
		Q1	Q2	Q3	Q4
N	1669	417	417	417	418
Mean	31.03%	0.86%	0.86%	0.91%	0.89%
Std Deviation	5.61%	0.22%	0.25%	0.25%	0.22%
100% Max	100.00%	2.82%	2.30%	2.15%	1.93%
99%	46.15%	1.48%	1.62%	1.68%	1.61%
95%	39.32%	1.21%	1.33%	1.41%	1.37%
90%	37.25%	1.12%	1.18%	1.25%	1.17%
75% Q3	33.90%	0.94%	0.98%	1.02%	0.96%
50% Median	30.74%	0.82%	0.81%	0.85%	0.84%
25% Q1	27.66%	0.72%	0.70%	0.73%	0.75%
10%	24.81%	0.64%	0.62%	0.65%	0.66%
5%	23.08%	0.58%	0.56%	0.59%	0.60%
1%	19.95%	0.49%	0.48%	0.52%	0.51%
0% Min	0.00%	0.46%	0.36%	0.48%	0.42%

CBE 0133 *In-Hospital Risk Standardized Mortality for Percutaneous Coronary Intervention (excluding cardiogenic shock and cardiac arrest)*

Figure 13: Distribution of RSMR Stratified by Quartile of Hospital Percent Female

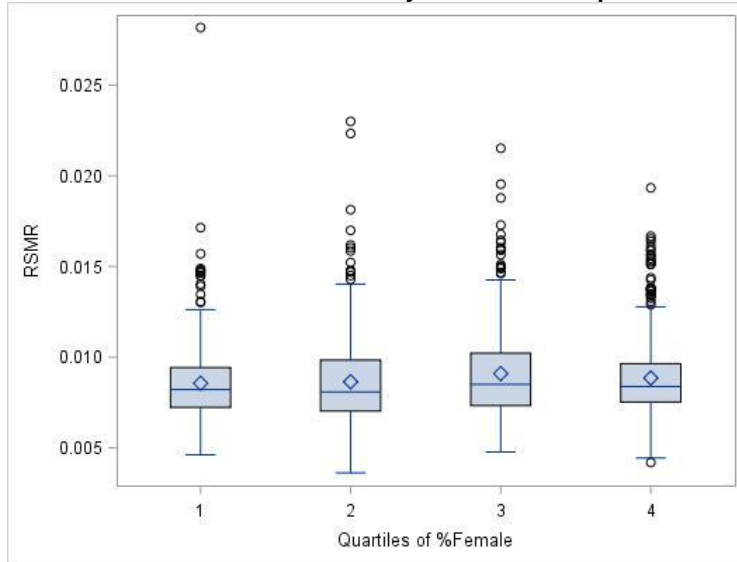


Table 17. Distribution of RSMR Stratified by Quartile of Hospital Percent Non-White

Description	%Non-White	%Non-White			
		Q1	Q2	Q3	Q4
N	1669	417	417	418	417
Mean	16.92%	0.86%	0.86%	0.89%	0.90%
Std Deviation	15.77%	0.21%	0.24%	0.24%	0.26%
100% Max	96.97%	1.88%	2.82%	1.81%	2.30%
99%	75.00%	1.51%	1.56%	1.64%	1.71%
95%	49.70%	1.32%	1.30%	1.37%	1.41%
90%	37.72%	1.15%	1.14%	1.22%	1.21%
75% Q3	23.18%	0.94%	0.96%	1.01%	1.00%
50% Median	12.16%	0.82%	0.82%	0.85%	0.85%
25% Q1	5.46%	0.73%	0.71%	0.74%	0.73%
10%	2.49%	0.64%	0.63%	0.65%	0.64%
5%	1.49%	0.60%	0.58%	0.59%	0.58%
1%	0.00%	0.52%	0.48%	0.48%	0.53%
0% Min	0.00%	0.44%	0.40%	0.36%	0.47%

CBE 0133 *In-Hospital Risk Standardized Mortality for Percutaneous Coronary Intervention (excluding cardiogenic shock and cardiac arrest)*

Figure 14: Distribution of RSMR Stratified by Quartile of Hospital Percent Non-White

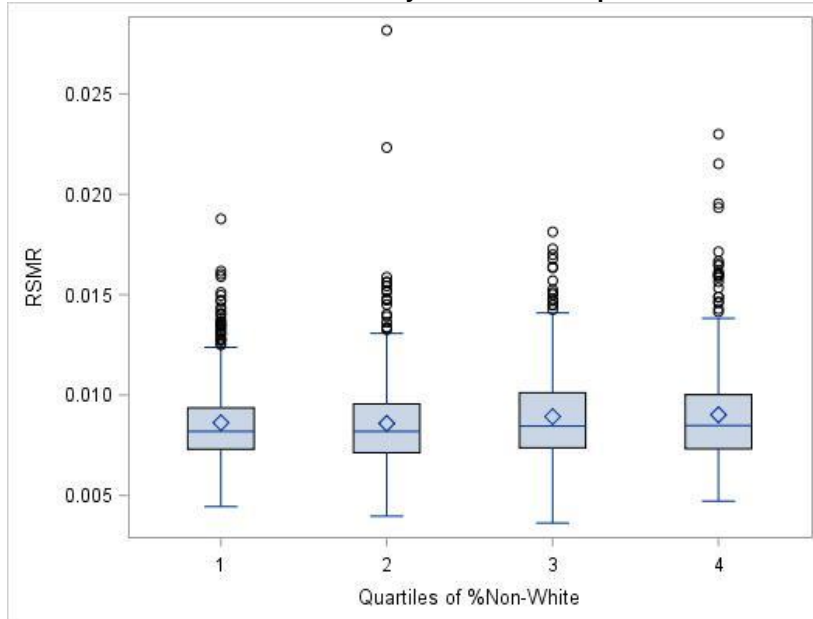
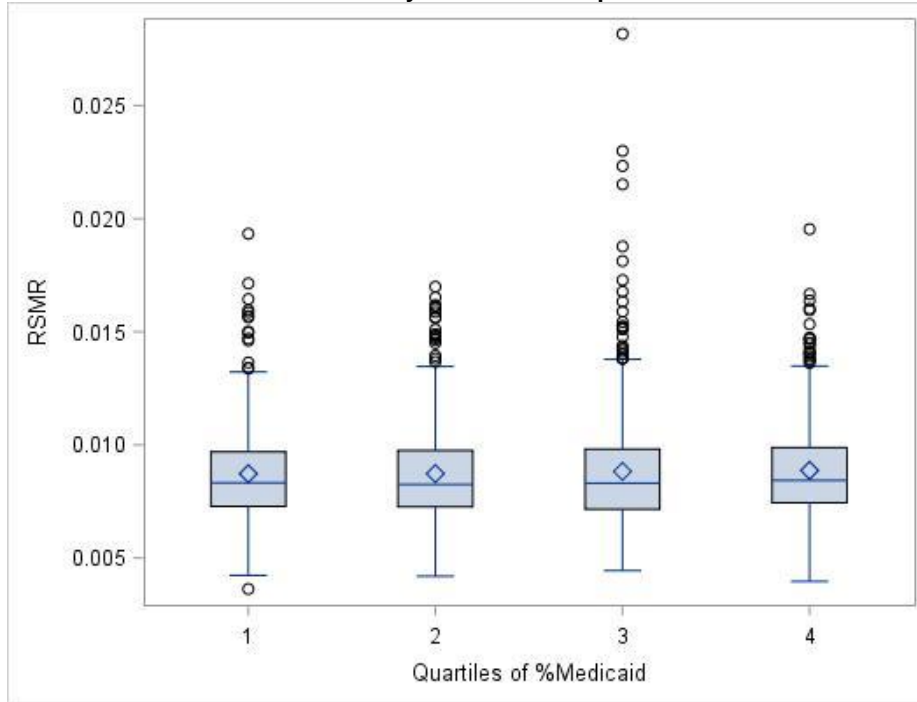


Table 18. Distribution of RSMR Stratified by Quartile of Hospital Percent Medicaid

Description	%Medicaid	%Medicaid			
		Q1	Q2	Q3	Q4
N	1669	417	417	418	417
Mean	13.44%	0.87%	0.87%	0.88%	0.89%
Std Deviation	9.74%	0.21%	0.23%	0.28%	0.22%
100% Max	72.09%	1.93%	1.70%	2.82%	1.95%
99%	47.98%	1.59%	1.60%	1.88%	1.59%
95%	31.53%	1.29%	1.33%	1.40%	1.34%
90%	25.42%	1.14%	1.21%	1.20%	1.18%
75% Q3	17.41%	0.97%	0.98%	0.98%	0.99%
50% Median	11.60%	0.83%	0.83%	0.83%	0.84%
25% Q1	6.80%	0.73%	0.73%	0.72%	0.74%
10%	3.53%	0.65%	0.64%	0.61%	0.65%
5%	1.95%	0.60%	0.59%	0.54%	0.59%
1%	0.00%	0.53%	0.49%	0.49%	0.53%
0% Min	0.00%	0.36%	0.42%	0.44%	0.40%

CBE 0133 *In-Hospital Risk Standardized Mortality for Percutaneous Coronary Intervention (excluding cardiogenic shock and cardiac arrest)*

Figure 15: Distribution of RSMR Stratified by Quartile of Hospital Percent Medicaid



- Additional table on exclusions

The table below illustrates the development of the study sample (denominator) as exclusions were applied by number of patients and facilities.

Exclusions	Number of Patients		Number of Facilities	
	#	%	#	%
Initial Sample	5194148		1833	
Discharges not between 01/01/2022 and 12/31/2022	4210214	81.06	148	8.07
Remaining	983934		1685	
Without PCI	336491	34.20	16	0.95
Remaining	647443		1669	
With cardiac arrest or shock on the admission	32312	4.99	0	0.00
Remaining	615131		1669	
Not first PCI during hospitalization	0	0.00	0	0.00
Remaining	615131		1669	
Salvage PCI	314	0.05	0	0.00
Remaining	614817		1669	
Transferred out	5912	0.96	0	0.00
Study Sample	608905		1669	