

Pre-Rulemaking Measure Review (PRMR) 2025-2026 PAC/LTC Listening Session

Dr. Michelle Schreiber | Centers for Medicare & Medicaid Services (CMS)

Brenna Rabel | Battelle

Dr. Meridith Eastman | Battelle

Dr. Lydia Stewart-Artz | Battelle

January 8, 2026

The analyses upon which this publication is based were performed under Contract Number 75FCMC23C0010, entitled, “National Consensus Development and Strategic Planning for Health Care Quality Measurement,” sponsored by the Department of Health and Human Services, Centers for Medicare & Medicaid Services. Restricted: Use, duplication, or disclosure is subject to the restrictions as stated in Contract Number 75FCMC23C0010 between the Government and Battelle.

Housekeeping Reminders

(pt. 1)



We are pleased to have you join us and want to create a meaningful exchange.



To participate in the discourse, please raise your hand when we open for comments and questions. Participants will be called on a first-come, first-served basis.



Battelle staff will serve as virtual moderators. Please unmute yourself when called on.

Housekeeping Reminders

(pt. 2)



Please lower your hand and mute yourself following your question/comment.



Please state your first and last name if you are a call-in user.



If you are experiencing technical issues, contact the project team at PQMsupport@battelle.org.

Welcome to the PAC/LTC Measures Listening Session



The 2025 MUC List public comment period was open on the [PQM website](#) from December 16, 2025 through January 6, 2026.



This session is an additional opportunity for members of the public to provide public comment on measures of interest proposed for PAC/LTC programs.



CMS and measure developers are on the line to hear comments and answer questions.

Listening Session Agenda



1:00 PM

Welcome and Introduction

1:05 PM

CMS Opening Remarks

1:10 PM

PRMR Process Overview

1:15 PM

Roundtable: Administration Priorities for Quality Measurement

1:20 PM

Public Comment Opportunity

1:55 PM

Next Steps

* All times listed in ET

Acronyms



- AG: Advisory Group
- CBE: Consensus-Based Entity
- CMS: Centers for Medicare & Medicaid Services
- MERIT: MUC Entry/Review Information Tool
- MSR: Measure Set Review
- MUC: Measures Under Consideration
- PA: Preliminary Assessment
- PAC/LTC: Post-Acute Care/Long-Term Care
- PIE: Pre-Meeting Initial Evaluation
- PRMR: Pre-Rulemaking Measure Review
- PQM: Partnership for Quality Measurement
- RG: Recommendation Group
- STAR: Submission Tool and Repository

CMS Opening Remarks

Dr. Michelle Schreiber | Centers for Medicare & Medicaid Services
(CMS)



PRMR Process Overview

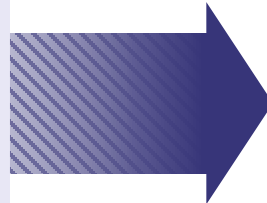
Dr. Lydia Stewart-Artz | Battelle



PRMR Overview



The **PRMR process** builds consensus to recommend measures under consideration (MUCs) for inclusion in CMS quality reporting and value-based programs.



Committees of interested parties evaluate measures on whether they are:

- ✓ Meaningful
- ✓ Tailored to a unique program and population need
- ✓ Balanced and scaled to meet program-specific goals
- ✓ Demonstrating a clear vision of near- and long-term program impacts

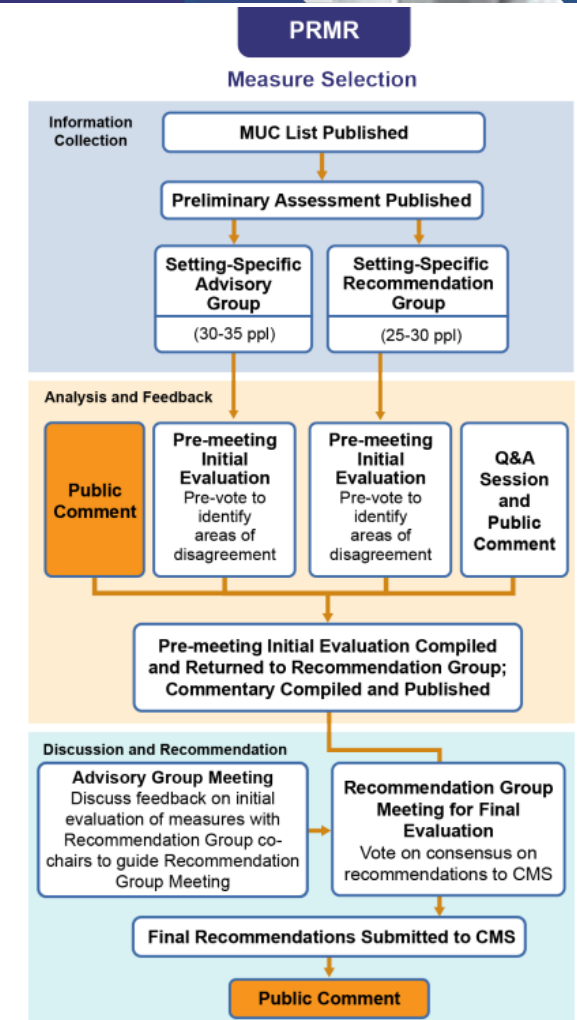
PRMR Process



The PRMR process builds consensus regarding MUC List measures as to whether they are appropriate for consideration for CMS quality reporting programs and value-based programs.

The feedback you provide today is shared with CMS and with the PRMR committee members to consider when they meet to decide on recommendations for measure use.

Complete details on the PRMR process are in the [Guidebook of Policies and Procedures for Pre-Rulemaking Measure Review \(PRMR\) and Measure Set Review \(MSR\)](#).

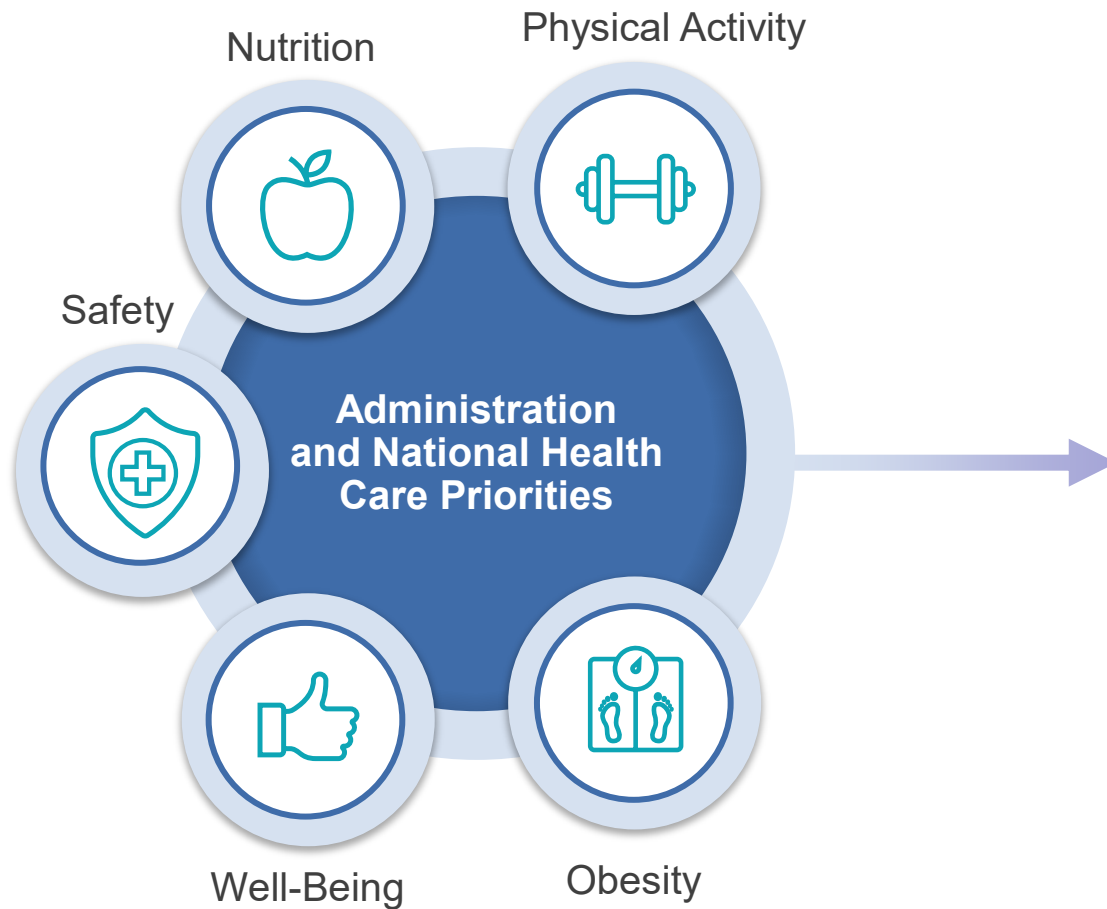


Roundtable: Administration Priorities for Quality Measurement

Dr. Lydia Stewart-Artz | Battelle



Roundtable: Administration Priorities for Quality Measurement



Goal:

- Committee will discuss the benefits and limitations of these quality measures and concepts and identify alternatives to consider.
- CMS will determine if these concepts are appropriate to be re-specified and expanded to other CMS programs, which will support alignment and help to meet the administration's quality measurement priorities.

Public Comment Opportunity

1:20 – 1:55 PM



MUC2025-020 Advance Care Planning (ACP)



Item	Description
Measure Description	Percentage of patients aged 18 years and older at the start of the measurement period with one or more inpatient encounters during the measurement period who have an advance care planning document or documentation of an advance care planning discussion resulting in a documented decision in the electronic health record (EHR) by the time of hospital discharge for at least one hospital encounter during the measurement period.
Measure Steward	CMS

Measure Type
Process
Level of Analysis
Facility
CBE Endorsement Status & History
Not Endorsed; Never submitted

MUC2025-020 Advance Care Planning (ACP) (cont.)



Item	Description
<p>CMS-Provided Rationale</p>	<p>CMS is considering including this measure in Post-Acute Care (PAC) Programs. PAC settings (e.g., Long-Term Care Hospitals and Home Health Agencies) support recovery after acute illness, injury, or major procedures, but patients' needs and goals can shift with changes in stability, function, therapy tolerance, cognition, prognosis, and preferences. Regular reassessment and clear communication help keep care person-centered, and advance care planning (ACP) supports shared decision-making and documents preferences to maintain goal-concordant care across transitions.</p>
<p>Considered For</p>	<p>Home Health Quality Reporting Program Inpatient Rehabilitation Facility Quality Reporting Program Long-Term Care Hospital Quality Reporting Program Skilled Nursing Facility Quality Reporting Program Skilled Nursing Facility Value-Based Purchasing Program</p>

<p>Measure Type</p>
<p>Process</p>
<p>Level of Analysis</p>
<p>Facility</p>
<p>CBE Endorsement Status & History</p>
<p>Not Endorsed; Never submitted</p>

Roundtable Measures

- Discharge Function Score
- Low Density Lipoprotein Cholesterol (LDL-C) Monitoring and Management
- Malnutrition Care Score (MCS)
- Percent of Residents Who Received an Antipsychotic Medication (Long-Stay)
- Preventive Care and Screening: Body Mass Index (BMI) Screening and Follow-up-plan
- Well-Being Signs

Next Steps

Dr. Meredith Eastman | Battelle



Public Comment Period



All comments—shared through our website or during this listening session—will be shared with:

- CMS
- Advisory Groups
- Recommendation Groups

Public comments help guide Recommendation Group discussions next month!



The written public comment period was open December 16, 2025 through January 6, 2026.

2025-2026 Key PAC/LTC Dates



Event	Dates
Roundtable: Administration Priorities for Quality Measurement Discussion	1/14/2026 9:00-11:30 AM ET
PAC/LTC Recommendation Group Meeting	1/14/2026 3:00-4:45 PM ET
PAC/LTC Listening Session Meeting Summary published on PQM website	1/19/2026
Final PRMR PAC/LTC Recommendation Group Meeting Summary published on PQM website	2/12/2026

2025-2026 Key PRMR Dates



Event	Dates
Final MUC Recommendations Spreadsheet published on PQM website	1/30/2026
Final MUC Recommendations Spreadsheet public comment period	2/2/2026-2/16/2026
Final MUC Recommendations Report published on PQM website	2/25/2026

Resources

The PRMR and MSR Guidebook

introduces processes and incorporates changes as suggested by interested parties through a public comment period.

Become a PQM member – it's free!



Guidebook of Policies and Procedures for Pre-Rulemaking Measure Review (PRMR) and Measure Set Review (MSR)



Questions or Comments?

Contact us at p4qm.org/contact
or by emailing PQMsupport@battelle.org





Partnership for
Quality Measurement
Powered by Battelle