



Issue Highlights

Pre-Rulemaking Measure Review (PRMR)

- 2025-2026 PRMR Recommendation Report Now Available

Endorsement & Maintenance (E&M)

- Fall 2025 Cycle by the Numbers
- Fall 2025 Cycle Appeals Period Open Until March 17
- "Endorsed by Extension" Status Update
- Spring 2026 Cycle Intent to Submit (ITS) Forms Due April 1

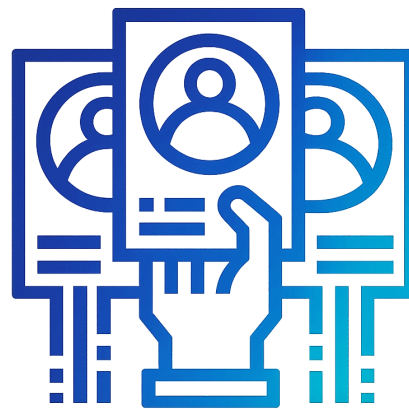
Core Quality Measures Collaborative (CQMC)

- Orthopedic Workgroup Meeting Summary
- Updated Core Measure Sets

Submit Member Accomplishments

Do you have any news or accomplishments you would like to share in the newsletter? We would love to include them. Submit a brief 150-word summary to PQMsupport@battelle.org with the subject "PQM Member Highlight."

PQM Committee Nominations Open April 27



Help shape the future of U.S. health care quality—nominate a colleague (or yourself) to serve on a PQM committee during our upcoming nomination period, April 27 - June 1. Committee members play a key role in setting quality standards and guiding quality measurement.

Why Participate?

PQM committee members have the opportunity to:

- Influence national health care quality standards
- Collaborate with experts and leaders across sectors
- Contribute to evidence-based recommendations that support Centers for Medicare & Medicaid Services (CMS) priorities
- Bring lived experience and community voices into the quality measurement process
- Serve on the PQM Scientific Methods Panel (SMP)

Who We're Looking For:

- Patients, caregivers, or advocates
- Experts in clinical care, public or population health, or quality measurement
- Individuals familiar with CMS programs or quality measure implementation
- Healthcare researchers and methodologists
- Individuals with expertise in data, analytics, or health IT (e.g., biostatistics, data science, Fast Healthcare Interoperability Resources (FHIR®))

PRMR Updates

Now Available: 2025-2026 PRMR Recommendations Report

The [2025–2026 PRMR Recommendations Report](#) is now live! This year's report highlights discussions from the Clinician, Hospital, and Post-Acute Care/Long-Term Care (PAC/LTC) Committees about which measures under consideration should move forward in select Centers for Medicare & Medicaid Services (CMS) programs. These recommendations play a key role in guiding the Department of Health and Human Services (HHS) as it selects measures that shape nationwide health care quality.

Voting Highlights

Committees reviewed 24 measures across 10 programs, with some measures considered for multiple programs. Of the 41 committee votes:

- 21 measures received consensus support.
- 7 measures did not reach consensus but received majority support.
- 4 measures did not reach consensus, with the majority expressing concerns.
- 9 measures had no agreement.

E&M Updates

SPRING 2026 CYCLE

Intent to Submit (ITS) Forms Due April 1

We are accepting ITS forms until **11:59 PM (ET) on April 1**. The [updated ITS templates](#) are effective for the Spring 2026 cycle.

For more information about the submission process and deadlines, please visit the [Measure Submission page](#).

"Endorsed by Extension" Status Update

Beginning with the Spring 2026 cycle, measure developers and stewards may request the new "Endorsed by Extension" status. This temporary designation extends endorsement beyond Battelle's 6-year limit for measures approved before October 2023 that face documented short-term resource constraints.

This helps ensure continuity while supporting developers as they address temporary challenges.

View the [public comments](#) and our [responses](#).

FALL 2025 CYCLE

Fall 2025 Cycle By the Numbers

Across four E&M projects, we brought together **73** Recommendation Group members and **40** measure developers to review and make endorsement decisions for **39** measures.

Thank you to everyone who participated in this cycle. Your expertise and dedication make this work possible, and we look forward to continuing this important partnership.

Submit Appeal by March 17

Appeal Fall 2025 endorsement decisions by **March 17** at 11:59 PM (ET). The Appeals Committee will meet on March 31 if an eligible appeal is received.

Request this status at PQMsupport@battelle.org.

Appeals eligibility criteria are listed in the [E&M Guidebook](#).

Additional details are available on the [PQM website](#).

CQMC Updates

Orthopedics Workgroup Meeting Summary

The Core Quality Measures Collaborative (CQMC)—a public-private partnership led by AHIP and CMS that is convened by PQM—brought together the CQMC Orthopedics Workgroup on February 12 to discuss potential additions and removals to the core measure set.

View the [meeting summary](#) for more information.



Updated Core Sets Focus on Outcomes & Reduce Burden

Recently, the CQMC updated nine core measure sets. The new sets add measures targeting complications, disease control, avoidable utilization, patient-experience gaps, care coordination, and specialty performance. CQMC also removed outdated or low-use measures to keep the sets aligned with value-based payment goals.

For more details, see the [press release](#).

About PQM

Who We Are

Battelle is a [CMS](#) certified consensus-based entity. Battelle's PQM uses a consensus-based process involving a variety of experts to ensure informed and thoughtful endorsement reviews of qualified measures.

For more information, please visit the [PQM website](#).

Become a PQM Member

Ready to use your health care experience or expertise to shape the future of health care quality? Join PQM! Membership is free.

[Join PQM](#)



Please rate how helpful you find this newsletter.



Partnership for Quality Measurement | 505 King Avenue | Columbus, OH 43201 US

[Unsubscribe](#) | [Constant Contact Data Notice](#)



Try email marketing for free today!