



**Issue Highlights**

**PQM Patient Partners  
 Receive CMS Patient  
 Safety Award**

**Endorsement &  
 Maintenance (E&M)**

- Spring 2026 cycle committee schedule
- Full Measure Submission (FMS) forms due May 1
- No appeals received for Fall 2025 cycle

**Submit Member  
 Accomplishments**

Do you have any news or accomplishments you would like to share in the newsletter? We would love to include them. Submit a brief 150-word summary to [PQMsupport@battelle.org](mailto:PQMsupport@battelle.org) with the subject "PQM Member Highlight."



**PQM Committee Nominations  
 Open April 27**

Help shape the future of U.S. health care quality—nominate a colleague (or yourself) to serve on a PQM committee during our upcoming nomination period, **April 27 - June 1**. Committee members play a key role in setting quality standards and guiding quality measurement.

**Why Join a Committee?**

- PQM committee members have the opportunity to:
- Influence national health care quality standards
  - Collaborate with experts and leaders across sectors
  - Contribute to evidence-based recommendations that support Centers for Medicare & Medicaid Services (CMS) priorities
  - Bring lived experience and community voices into the quality measurement process
  - Serve on the PQM Scientific Methods Panel (SMP)

**Who Are We Looking For?**

- Patients, caregivers, or advocates
- Experts in clinical care, public or population health, or quality measurement
- Individuals familiar with CMS programs or quality measure implementation
- Health care researchers and methodologists
- Individuals with expertise in data, analytics, or health IT (e.g., biostatistics, data science, Fast Healthcare Interoperability Resources (FHIR®))

**PQM Patient Partners Honored with CMS Patient  
 Safety Advocacy Award**

PQM patient partners, **Rosie Bartel** and **Precious McCowan**, were recognized by CMS with the Jean Moody-Williams Patient Safety Advocacy Award during the 2026 CMS Quality Conference in Baltimore, Maryland, on March 17, 2026. This award recognizes their exceptional commitment to elevating the patient voice and advancing patient safety nationwide.

Ms. Bartel sits on the Pre-Rulemaking Measure Review (PRMR) Hospital Committee and the E&M Management of Acute Events and Chronic Conditions Committee.

Ms. McCowan serves on the E&M Initial Recognition and Management Committee. In these roles, they help ensure patient perspectives are central to quality measurement by sharing their lived experiences and insights.

We appreciate the time, dedication, and advocacy Rosie and Precious bring to our work and patient care, in general. Congratulations on this well-deserved recognition!



**E&M Updates**

**SPRING 2026 CYCLE**

**FALL 2025 CYCLE**

## Committee Meetings Scheduled

**E&M Committee Members:** We have emailed invitations for upcoming committee meetings. If you did not receive an invitation, please email [PQMsupport@battelle.org](mailto:PQMsupport@battelle.org) with "E&M Meeting Invitation" as the subject.

**Advisory Group Meetings** are scheduled for June 29 - July 6, 2026.

**Endorsement Meetings** are scheduled for August 5 - 13, 2026. Recommendation Group members are *required* to attend.

## Full Measure Submission (FMS) Forms Due May 1

FMS forms for the Spring 2026 cycle are due by **11:59 PM (ET) on May 1**. View the PQM [Measure Submission page](#) for more details about the E&M submission process.

**Technical Assistance for Measure Developers:** For help prior to your submission, please email [PQMsupport@battelle.org](mailto:PQMsupport@battelle.org) with the subject "E&M Technical Assistance Request."

## Final Reports Coming in May

With no appeals received, the Final Fall 2025 Cycle Technical Reports will be available on the [PQM website](#) in May.

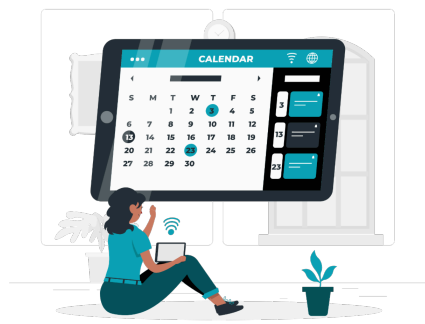
## Thank You for Participating!

Thank you to our committee members for actively participating throughout the Fall 2025 cycle—your contributions are essential to our success.

We also appreciate the developers and stewards who submitted measures for evaluation and engaged with the committees.

Thank you to everyone who shared feedback on the Fall 2025 cycle to help strengthen and improve the process.

## Upcoming Educational Webinar



### "PQM Endorsement: From Criteria to Consensus"

**When: April 23, 2 PM - 3 PM (ET)**

This webinar highlights the PQM endorsement framework and the role of staff assessments in measure evaluation. It explains how evaluation criteria and holistic review guide committee deliberations, helping to ensure transparent, consistent, and aligned endorsement decisions.

For more information, visit the [webinar event page](#).

[Register for Webinar](#)

### PQM Resources

- **Questions:** [PQMsupport@battelle.org](mailto:PQMsupport@battelle.org)
- **Website:** [P4QM.org](http://P4QM.org)
- **Events:** [PQM Event Calendar](#)



### Become a Member

Ready to use your health care experience or expertise to shape the future of health care quality? Join PQM! Membership is free.

[Join PQM](#)

Please rate how helpful you find this newsletter.



Partnership for Quality Measurement | 505 King Avenue | Columbus, OH 43201 US

[Unsubscribe](#) | [Constant Contact Data Notice](#)



Try email marketing for free today!