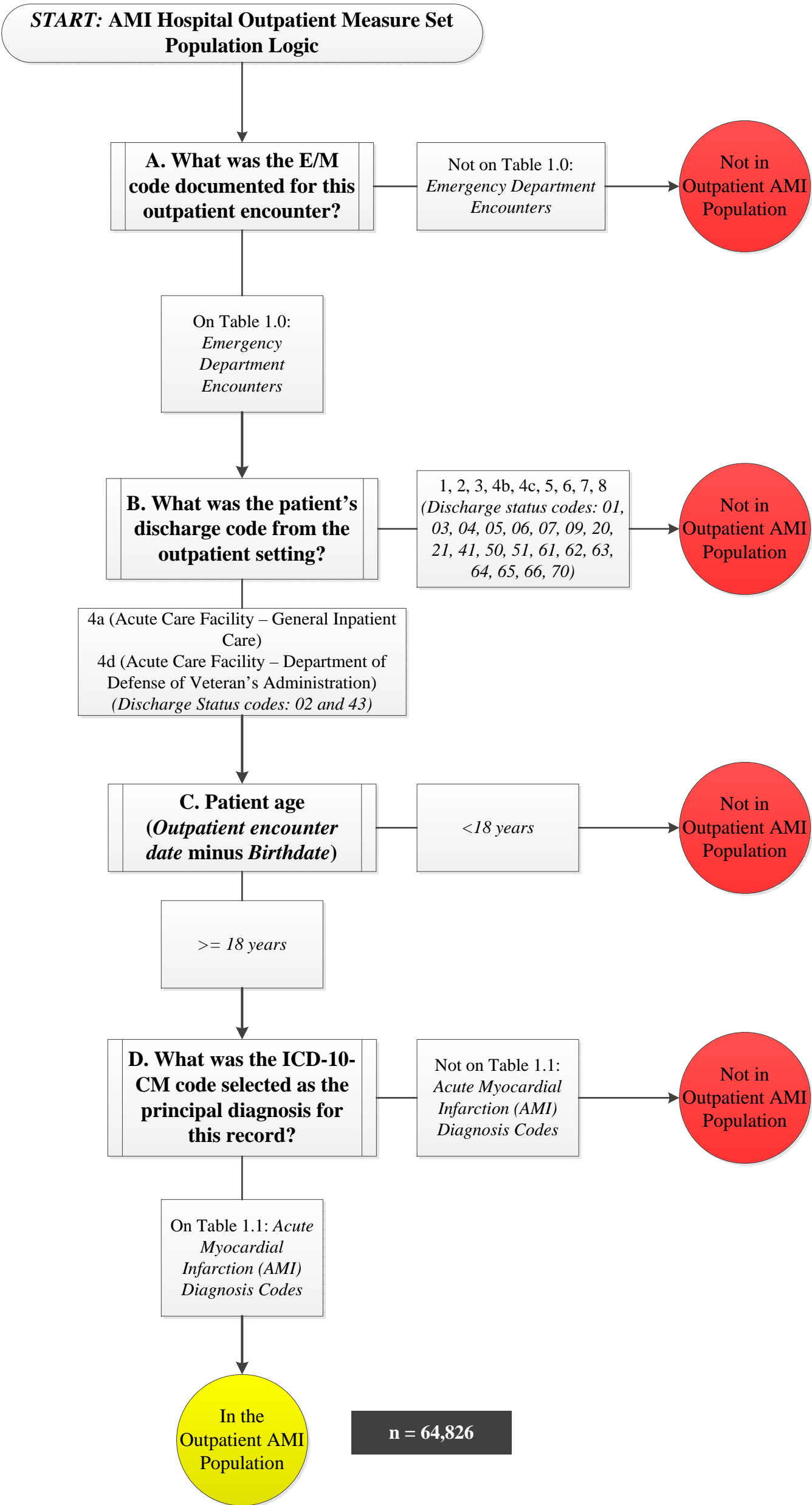
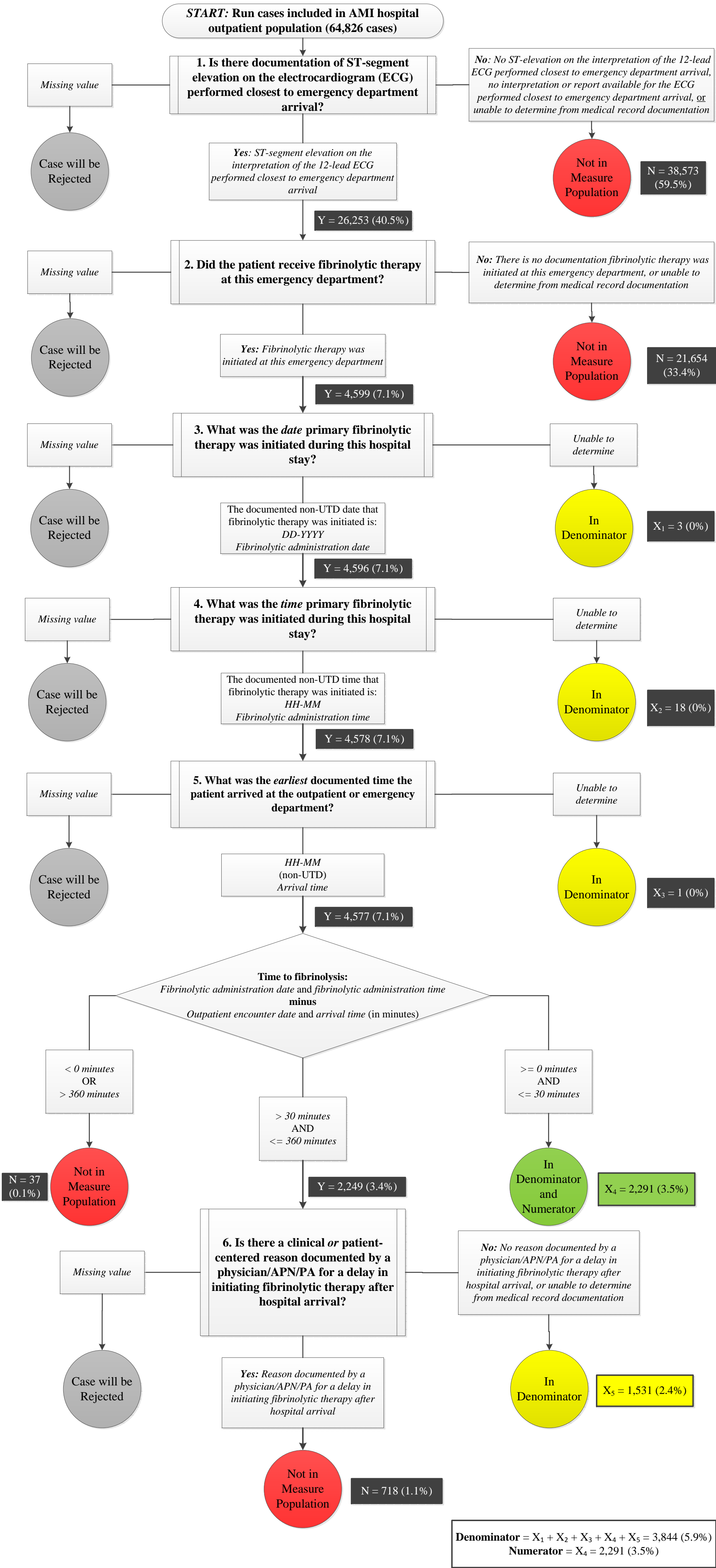


ACUTE MYOCARDIAL INFARCTION (AMI) HOSPITAL OUTPATIENT  
POPULATION ALGORITHM



#0288: FIBRINOLYTIC THERAPY RECEIVED WITHIN 30 MINUTES OF ED ARRIVAL  
MEASURE ALGORITHM



## Key

**Grey** = Rejected case results if abstractor does not populate data element with an allowable value; abstractor **must** select an allowable value before proceeding

**Red** = Not included in the measure population (denominator)

**Yellow** = Included in measure denominator (all but the last node are numerator exceptions; last node is final denominator)

**Green** = Included in measure numerator

**N** = Number of cases removed from the measure at a particular node

**Y** = Number of cases with an acceptable value that advance to the next node of the algorithm

**X** = Number of cases that comprise the measure denominator

**(%)** = Percentage of AMI population (number of cases / total AMI population of 64,826)

**Numerator** = Total number of cases that pass the measure criteria

**Denominator** = Total “effective sample” after denominator exclusions have been applied

**Data Source** = Clinical Data Warehouse (CDW)

### **Data Dates**

*Denominator:* April 1, 2014–March 31, 2015

*Numerator:* April 1, 2014–March 31, 2015

*Exclusions:* April 1, 2014–March 31, 2015

*Exceptions:* April 1, 2014–March 31, 2015

### **Data Elements: Acute Myocardial Infarction Hospital Outpatient Population**

- A. E/M Code
- B. Discharge Code
- C. Patient Age
- D. ICD-10-CM Principal Diagnosis Code

### **Data Elements: NQF #0288 Measure**

- 1. Initial ECG Interpretation
- 2. Fibrinolytic Therapy
- 3. Fibrinolytic Therapy Date
- 4. Fibrinolytic Therapy Time
- 5. Arrival Time
- 6. Reason For Delay in Fibrinolytic Therapy