

**KCQA  
PATIENT EDUCATION AWARENESS—FACILITY LEVEL**

**ATTACHMENT A: TABLES AND GRAPHS**

**Table 1. Patient Education Measure Performance, Submitted vs. Reabstracted Data**

MEASURE	SUBMITTED DATA	REABSTRACTION DATA
Patient Education Awareness	10.6% (22 of 208)	23.1% (48 of 208)

**Table 2. Patient Education Measure Aggregate Reliability**

MEASURE	Y/Y	Y/N	N/Y	N/N	KAPPA	95% CI
Patient Education Awareness	5	43	17	143	-0.0026	-0.1251-0.1199

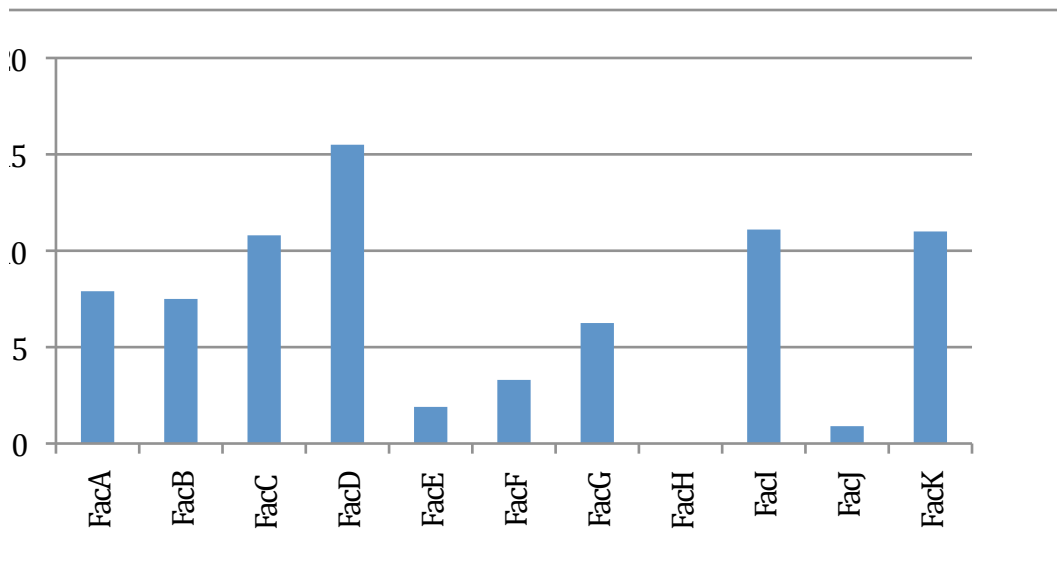
X/Z=auditor/facility so that Y/N are false negatives and N/Y are false positives

**Table 3. Patient Education Measure Reliability Percentage and Error Type**

MEASURE	REABSTRACTION UNIVERSE	TOTAL DISCORDANCE	RELIABILITY PERCENTAGE	DISCORDANCE CODES*						
				1	2	3	4	5	6	7
Patient Education Awareness	208	60	71.2%	12	43				3	2

\* Reason for Discrepancies: 1=Data entry/transcription error; 2=Information missed; 3=Illegible document; 4=Conflicting information; 5=Unclear element definition; 6=Not following definition; 7=Other/not determined.

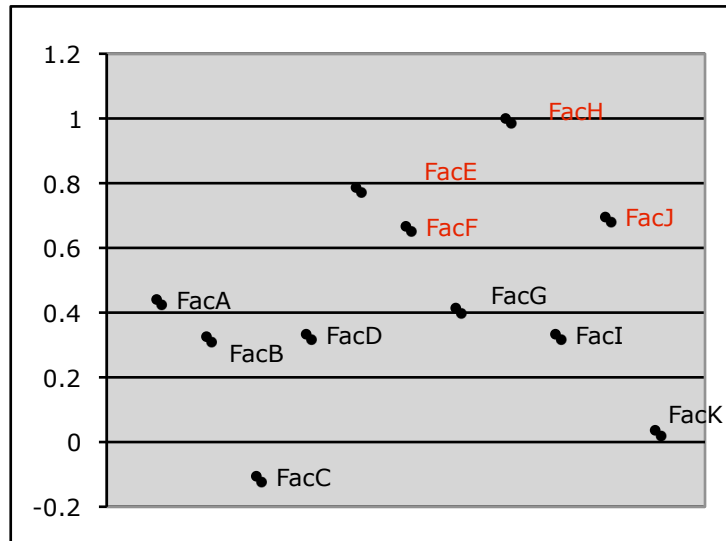
**Figure 1. Percent of Errors for Patient Education Measure Data Elements**



**Table 4. Kappas by Facility<sup>1</sup>**

FACILITY	KAPPA
Facility A	0.4406
Facility B	0.3257
Facility C	-0.1056
Facility D	0.3333
Facility E	0.7897
Facility F	0.6667
Facility G	0.4141
Facility H	1
Facility I	0.3333
Facility J	0.6954
Facility K	0.0364

**Figure 2. Average Kappas by Facility**



**Table 5. Patient Education Measure Reliability of Individual Data Elements**

(KEY: Row 1 = True findings; Row 2 = FNs counted as TPs)

DATA ELEMENT	Y/Y (True +)	Y/N (False -)	N/Y (False +)	N/N (True -)	KAPPA	95% CI	AGREEMENT
Overall Measure Results	5 46	43 2	17 18	143 143	-0.0026 0.7579	0.1251-0.1199 0.6248-0.8910	Less than Chance Substantial
Modalities Discussed:	96	55	16	40	0.2871	0.1547-0.4139	Fair
• HD	149	2	16	40	0.7609	0.6270-0.8948	Substantial
• PD	88 122	56 2	14 9	49 49	0.3275 0.8071	0.2028-0.4522 0.6722-0.9420	Fair Almost Perfect
• HHD	94 150	58 2	11 11	44 44	0.3288 0.8302	0.2077-0.4499 0.6950-0.9654	Fair Almost Perfect
• TPs	132 151	21 2	26 26	28 28	0.3930 0.5903	0.2570-0.5290 0.4627-0.7179	Fair Moderate
• Living Donors	20 75	57 2	27 27	103 103	0.0565 0.7188	-0.0717-0.1847 0.5867-0.8509	Slight Substantial
• No Therapy	43 91	50 2	3 3	111 111	0.4573 0.9512	0.3379-0.5767 0.8150-1.0000	Moderate Almost Perfect

<sup>1</sup> In calculating the Kappas, we used the average Kappa of the individual modality data elements for each facility, rather than the facility's overall Kappa for the measure. The latter was nonsensical for this analysis—even some facilities that had a lower percentage of overall errors had negative overall Kappas because we might have disagreed about the overall measure results. That is, even if there is a single error per patient, it would count as a discordance with our findings for the overall measure results. A facility could have a total of only 25 errors distributed evenly over its 25 patients and could still have a Kappa of 0 or less, since we would not agree on the final results. Conversely, another facility could have 25 errors that all occurred in only 5 of 25 patients and its Kappa could be well over 0.6 because we would agree on the final results in 20 of the measures.

**Table 6. Patient Education Measure Reliability Percentage, Physician Office Setting**

MEASURE	REABSTRACTION UNIVERSE	TOTAL DISCORDANCE	RELIABILITY PERCENTAGE	DISCORDANCE CODES*						
				1	2	3	4	5	6	7
<b>Functional AVF or Evaluation by Vascular Surgeon for Placement</b>	107	2	98%		2					

The IFMC discordance codes are: 1=Data entry error; 2=Information missed; 3=Illegible documentation;  
4=Conflicting information; 5=Unclear element definition; 6=Not following definition; 7=Other